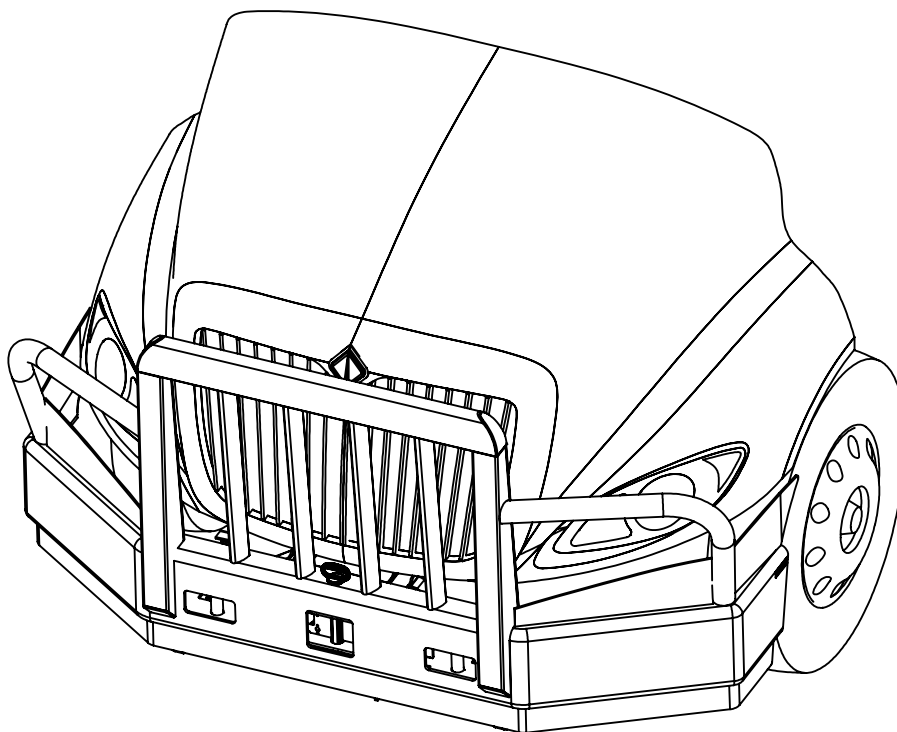




INSTALLATION GUIDE

MODEL NUMBER: 17295

TRUCK MODEL: 2008/2017 INTERNATIONAL PROSTAR/LT



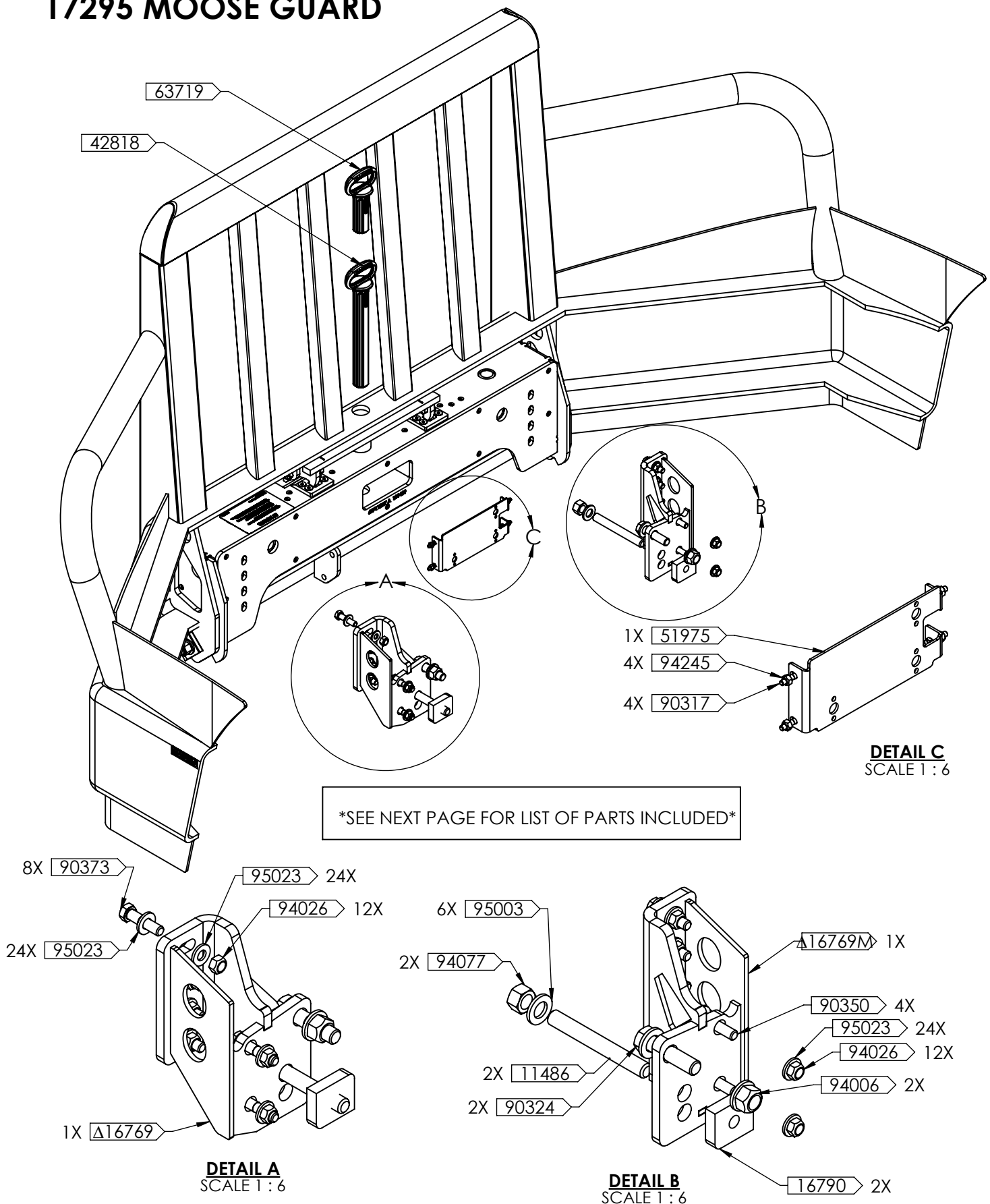
IMPORTANT INFORMATION

- THIS GUIDE IS ONLY APPLICABLE TO PRODUCTS AND TRUCK MODELS SPECIFIED.
- THE CORRECT SIZE AND GRADE OF HARDWARE SPECIFIED IN THIS GUIDE MUST BE USED.
- CHECK ALL MOUNTING POINTS AFTER THE FIRST 5000KM'S IN SERVICE AND PERIODICALLY THERE AFTER. RE-TORQUE IF NECESSARY.
- RECOMMENDED ADDING THREADLOCKER (LOCTITE BLUE 242) TO ALL THREADS BEFORE INSTALLING.
- ALL MAGNUM PRODUCTS MUST BE INSTALLED ACCORDING TO THIS INSTALLATION GUIDE. ANY DEVIATIONS MAY RESULT IN VOID OF WARRANTY.
- ANY ALTERATIONS TO THE PRODUCT MAY RESULT IN VOID OF WARRANTY.

SAFETY INFORMATION

- PROPER PERSONAL PROTECTIVE EQUIPMENT MUST BE WORN WHEN INSTALLING THIS PRODUCT.
- SOME PARTS OF THIS PRODUCT MAY BE HEAVY OR AWKWARD TO HANDLE. USE CAUTION WHEN HANDLING.

17295 MOOSE GUARD





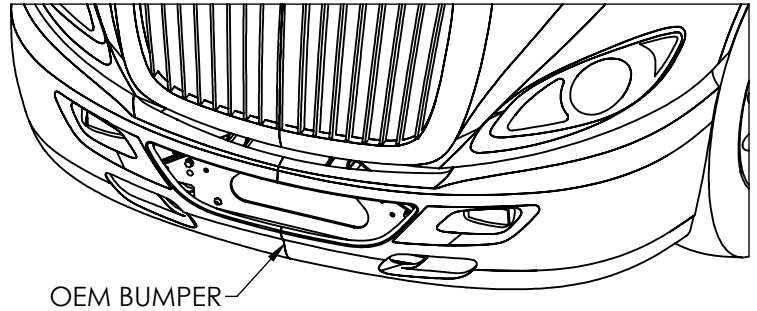
ASSEMBLY KIT PARTS

ITEM#	DESCRIPTION	MAT'L	DIMENSIONS	WT. EA	STOCK #	QTY.
11486	MOUNT STUD	GRADE B7	3/4" NC REDI-ROD X 6 1/4"	.78	106647	2
16769	MOUNT BRACKET ASSEMBLY		ASSEMBLY	12.3	106536	1
16769M	MOUNT BRACKET ASSEMBLY - MIRROR		ASSEMBLY	12.	106537	1
16790	NUT PLATE	44W	5/8" PL X 2 1/8" X 2 1/2"	.87	106540	2
42818	CAST TOWPIN	130-90-09 CAST IRON	Ø1 1/2 X 13 5/8	5.4	125613	1
51975	BENDIX RADAR (FLR-20) MOUNTING BRACKET (VER 3)	5052-H32	1/8" X 10 29/32" X 4 1/4"	.47	127701	1
63719	SHORT CAST LATCH PIN (4-1/2 IN)	65-45-12 CAST IRON	Ø1 1/2 X 6 3/4	2.8	131663	1
90317	HEX CAPSCREW - PLATED	GR. 5	1/4" NC X 1"	.022	101551	4
90324	HEX HEAD BOLT - PLATED	GR. 8	3/4" NC X 3"	.51	101875	2
90350	HEX HEAD BOLT - PLATED	GR. 8	1/2" NC X 2 1/4"	.17	101767	4
90373	HEX HEAD BOLT - PLATED	GR. 8	1/2" NC X 2"	.15	101765	8
94006	STOVER NUT - PLATED	GR. C	3/4" NC	.12	101477	2
94026	STOVER NUT - PLATED	GR. C	1/2" NC	.032	101475	12
94077	HEX NUT - PLATED	GR. 8	3/4" NC	.12	101440	2
94245	STOVER NUT - PLATED	GR. C	1/4 NC	.0082	101476	4
95003	FLAT WASHER - PLATED	GR. 8	3/4" DIA SAE	.055	102169	6
95023	FLAT WASHER - PLATED	GR. 8	1/2" DIA SAE	.024	102167	24

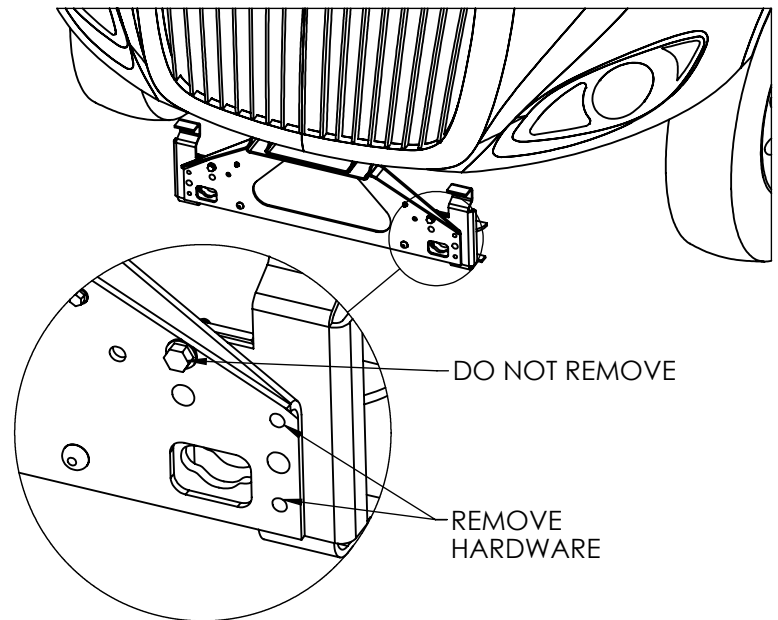


INSTALLATION PROCEDURE

1. UNINSTALL THE OEM BUMPER FROM THE TRUCK.

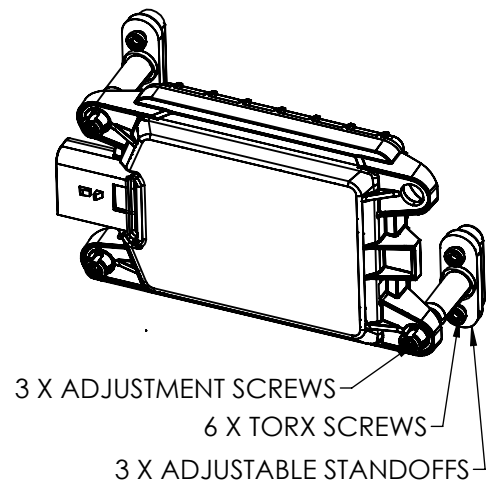


2. REMOVE THE TWO SETS OF FASTENERS ON EACH SIDE OF THE FRAME SHOWN IN THE FIGURE ON THE RIGHT.



3. IF RADAR IS EQUIPPED ON THE TRUCK IT MUST BE REMOVED FIRST BEFORE INSTALLING THE MOOSE GUARD. KEEP THE ORIGINAL MOUNTING HARDWARE SEEN IN THE FIGURE TO THE RIGHT:

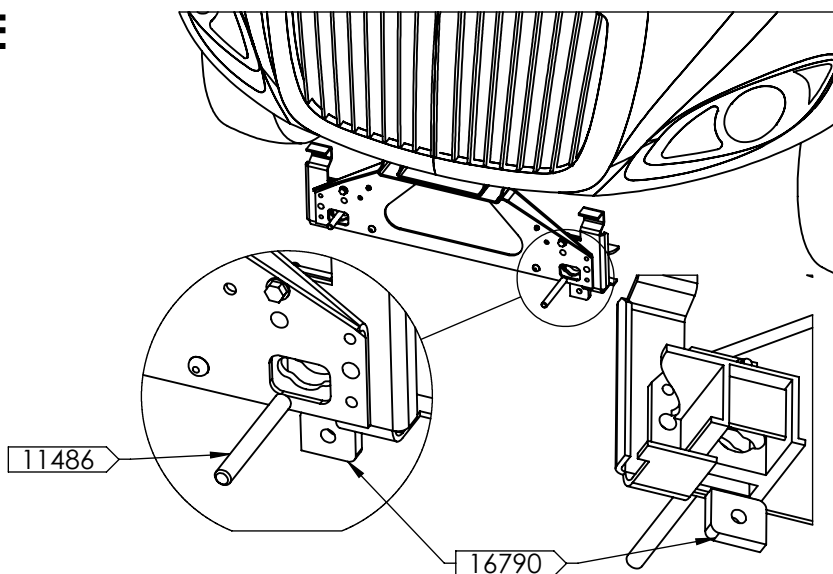
- 3 X ADJUSTABLE STANDOFFS
- 3 X ADJUSTMENT SCREWS
- 6 X TORX SCREWS



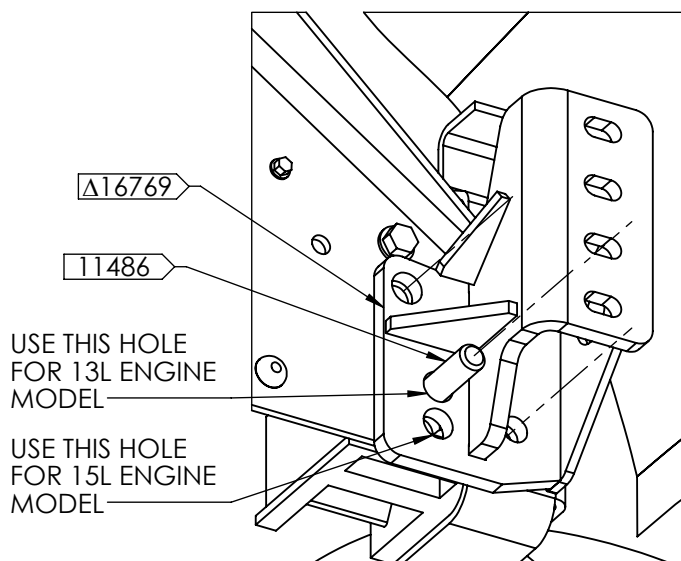


INSTALLATION PROCEDURE

4. INSERT **T6790** IN THE BACK OF THE TOW RECEIVER. THREAD THE **T1486** STUD INTO **T6790** THROUGH THE FRONT OF THE TOW RECEIVER.



5. INSTALL **A16769** ON THE DRIVER SIDE AND **A16769M** ON THE PASSENGER SIDE. INSERT THE BRACKETS SO THAT **T1486** GOES INTO ONE OF THE TWO BOTTOM HOLES. DEPENDING ON THE TRUCK ENGINE SIZE, THERE ARE TWO POSSIBLE CONFIGURATIONS, PLEASE SEE THE FIGURE ON THE RIGHT TO SELECT THE CORRECT HOLE.



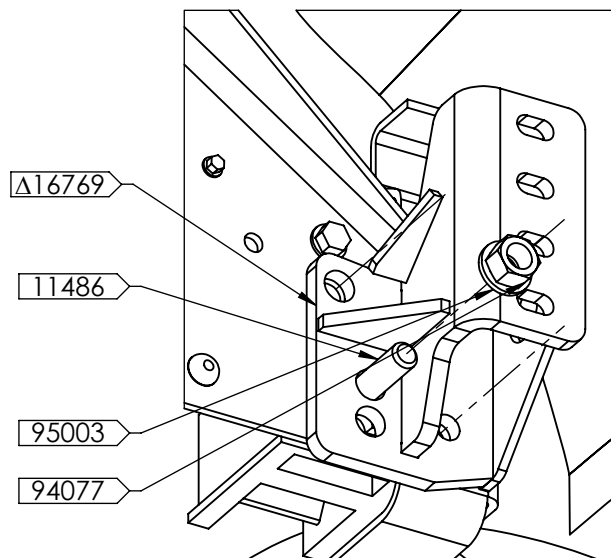
6. SECURE THE BRACKETS WITH **T1486**

USING THE FOLLOWING HARDWARE:

2 X **94077** NUTS

2 X **95003** WASHERS

TORQUE TO 200 FT-LBS (LUBRICATED) / 260 FT-LBS (DRY).



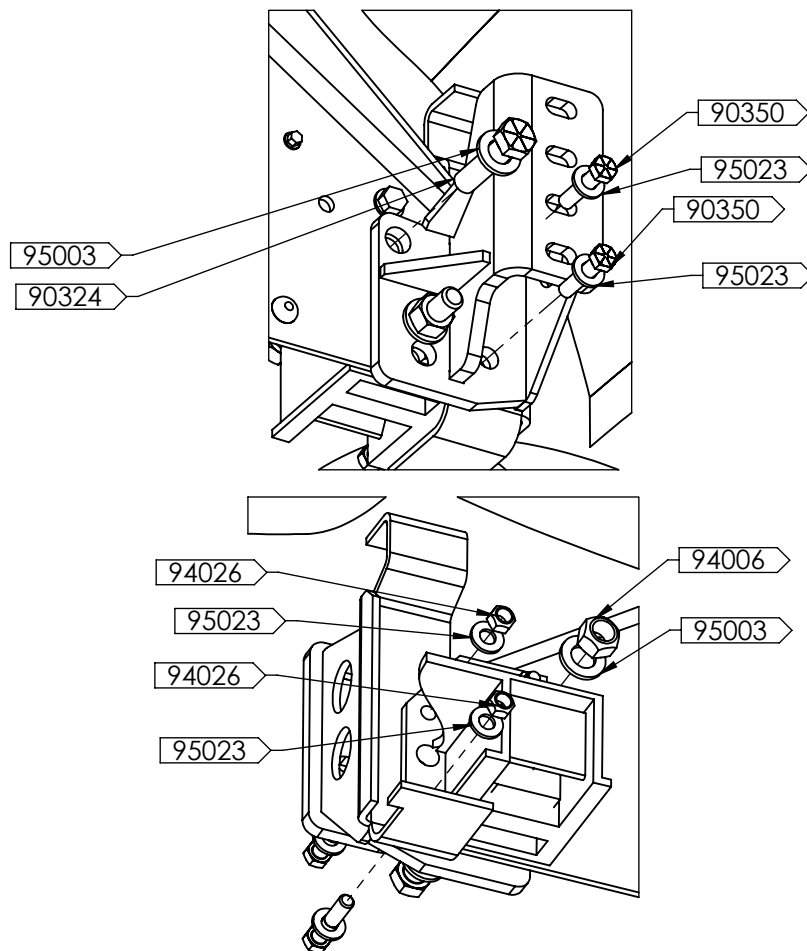
INSTALLATION PROCEDURE

7. SECURE THE BRACKET WITH FOLLOWING
HARDWARE:

- 2 X 90324 BOLTS
- 4 X 95003 WASHERS
- 2 X 94006 NUTS
- 4 X 90350 BOLTS
- 8 X 95023 WASHERS
- 4 X 94026 NUTS

TORQUE THE 3/4" HARDWARE TO 280 FT-LBS
(LUBRICATED) / 380 FT-LBS (DRY).

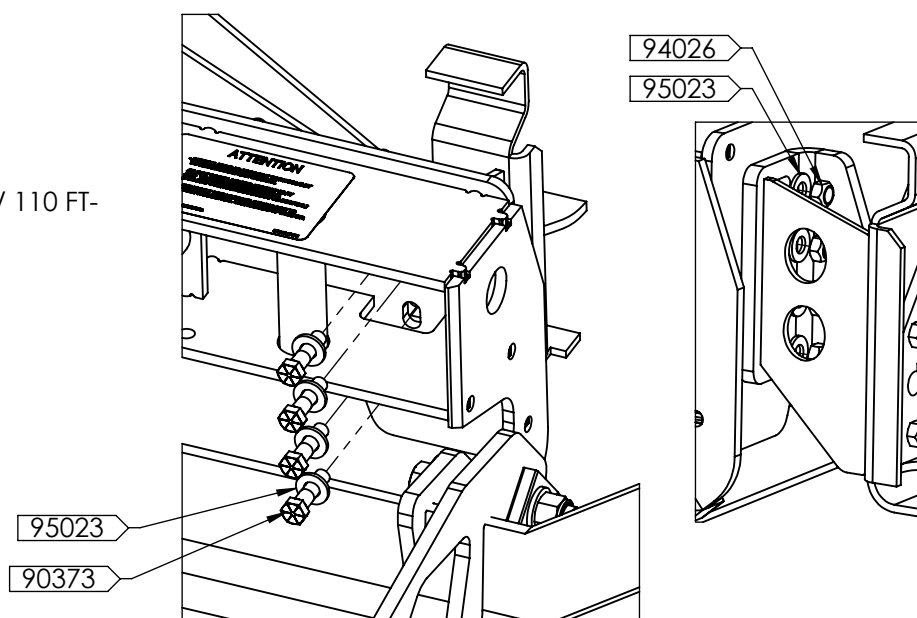
TORQUE THE 1/2" HARDWARE TO 80 FT-LBS
(LUBRICATED) / 110 FT-LBS (DRY).



8. ATTACH THE GUARD TO THE BRACKETS
USING THE FOLLOWING HARDWARE:

- 8 X 90373 BOLTS
- 16 X 95023 WASHERS
- 8 X 94026 NUTS

TORQUE TO 80 FT-LBS (LUBRICATED) / 110 FT-LBS (DRY).

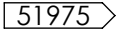


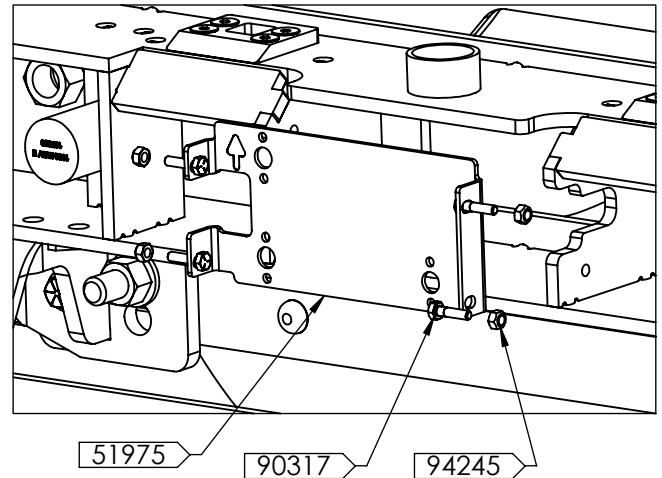


INSTALLATION PROCEDURE

NOTE:

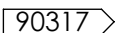
RADAR MUST BE ALIGNED AND RE-CALIBRATED AFTER GUARD INSTALLATION. ALIGNMENT AND CALIBRATION CAN ONLY BE DONE BY AUTHORIZED PERSONNEL.

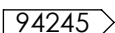
9. INSTALL RADAR ONTO  REUSING THE ORIGINAL HARDWARE:
3 X ADJUSTABLE SCREWS
3 X ADJUSTABLE STANDOFFS
6 X TORX SCREWS



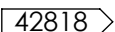
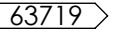
10. RECONNECT THE RADAR TO THE TRUCK (USE BRACKET SLOT TO FISH RADAR CABLE)

11. MOUNT THE ASSEMBLY INTO THE GUARD USING THE FOLLOWING HARDWARE:

4 X  BOLTS

4 X  NUTS

TORQUE TO 6 FT-LBS (LUBRICATED) / 8 FT-LBS (DRY).

12.  COMES INSTALLED ON THE GUARD. HOWEVER, IF THE TRUCK IS EQUIPPED WITH RADAR SWITCH IT TO . THE LONGER PIN IS NOT COMPATIBLE WITH THE RADAR.

CLOSE THE GUARD TO COMPLETE THE INSTALL.

THANK YOU FOR CHOOSING MAGNUM.

