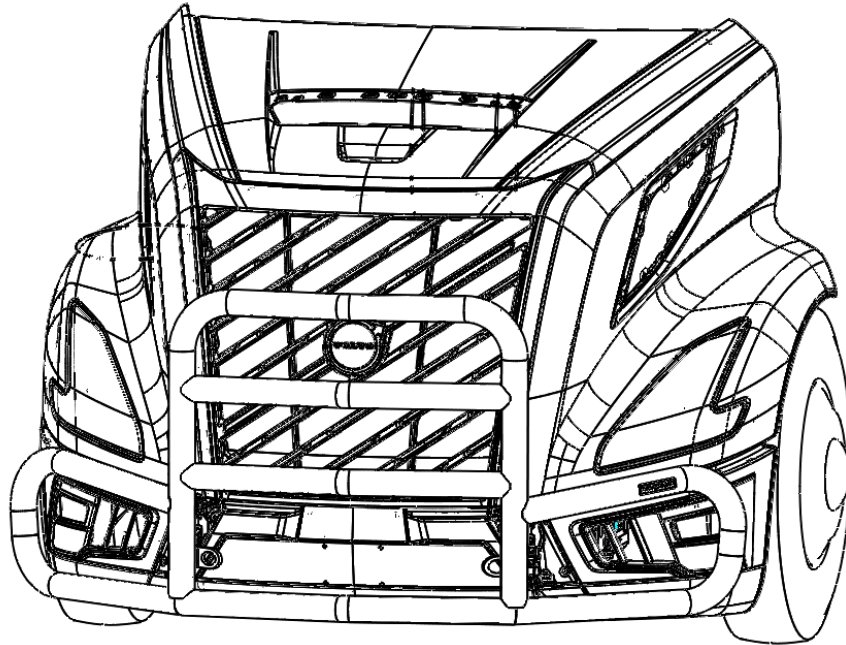


INSTALLATION GUIDE

MODEL NUMBER: VLMG2VNL

TRUCK MODEL: 2024+ VOLVO VNL



IMPORTANT INFORMATION

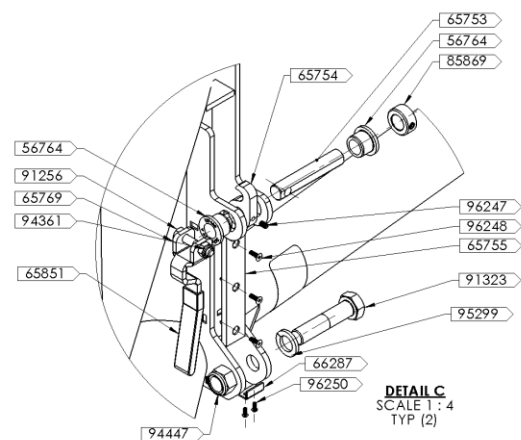
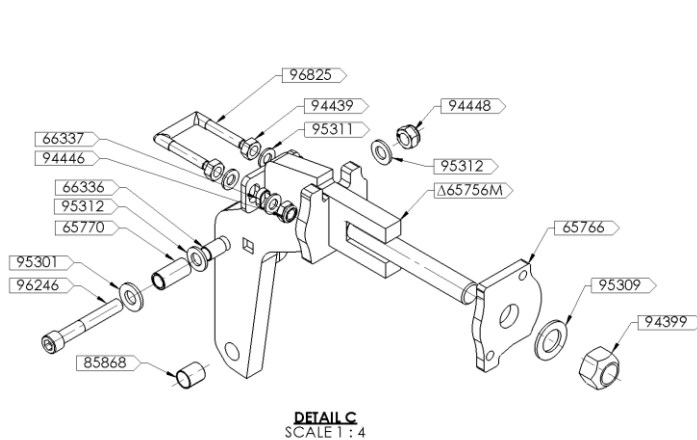
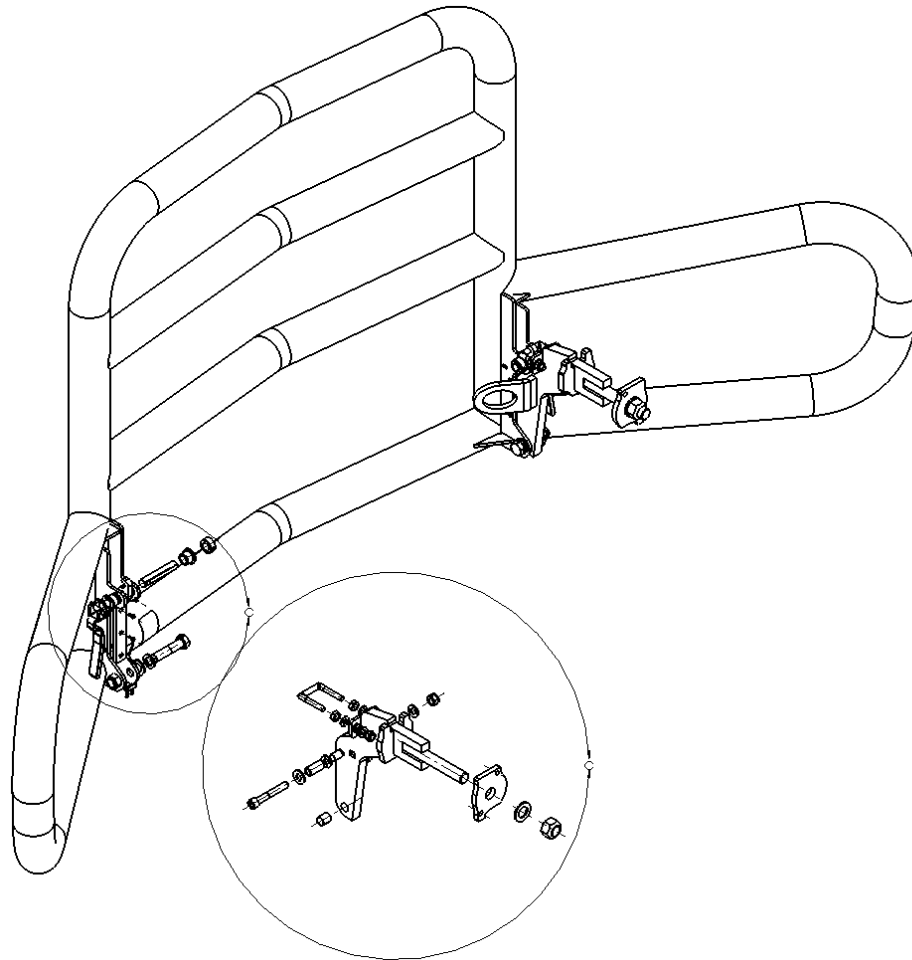
- THIS GUIDE IS ONLY APPLICABLE TO PRODUCTS AND TRUCK MODELS SPECIFIED.
- THE CORRECT SIZE AND GRADE OF HARDWARE SPECIFIED IN THIS GUIDE MUST BE USED.
- CHECK ALL MOUNTING POINTS AFTER THE FIRST 5000KM'S IN SERVICE AND PERIODICALLY THERE AFTER.
RE-TORQUE IF NECESSARY.
- RECOMMENDED ADDING THREADLOCKER (LOCTITE BLUE 242) TO ALL THREADS BEFORE INSTALLING.
- ALL MAGNUM PRODUCTS MUST BE INSTALLED ACCORDING TO THIS INSTALLATION GUIDE. ANY DEVIATIONS MAY RESULT IN VOID OF WARRANTY.
- ANY ALTERATIONS TO THE PRODUCT MAY RESULT IN VOID OF WARRANTY.

SAFETY INFORMATION

- PROPER PERSONAL PROTECTIVE EQUIPMENT MUST BE WORN WHEN INSTALLING THIS PRODUCT.
- SOME PARTS OF THIS PRODUCT MAY BE HEAVY OR AWKWARD TO HANDLE. USE CAUTION WHEN HANDLING.



VLMG2VNL



SEE NEXT PAGE FOR LIST OF PARTS INCLUDED

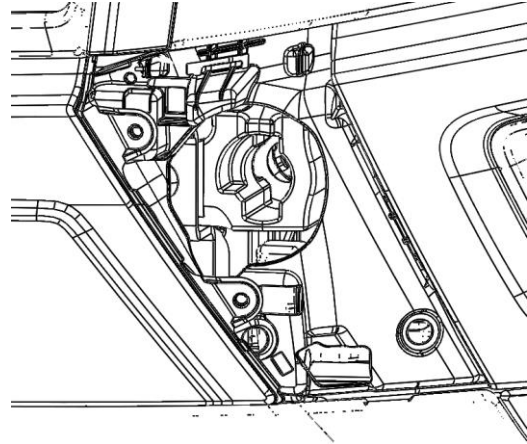
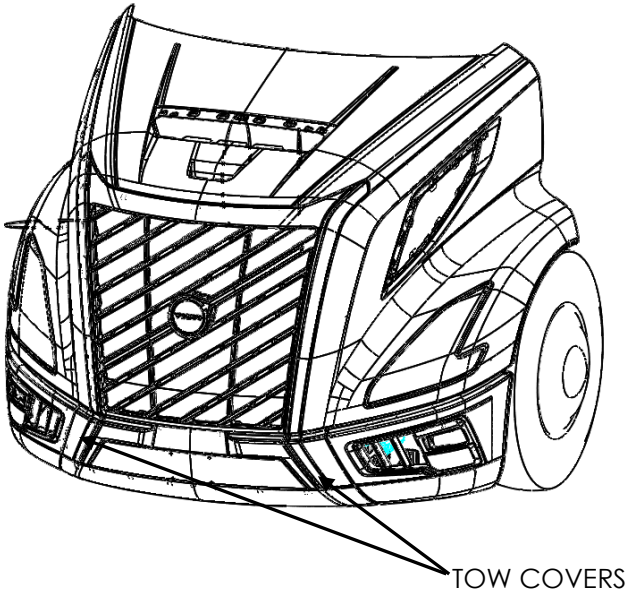
ASSEMBLY KIT PARTS

ITEM#	DESCRIPTION	MAT'L	DIMENSIONS	STOCK #	QTY.
56764	FLANGE BUSHING	PUR	SEE PA - 56764	129468	4
65753	SHAFT	T-304	SEE PA - 65753	132408	2
65754	LOCKING CAM	T-304	SEE PA - 65754	132409	2
65755	RUBBER BUMPER	PUR 95A	SEE PA - 65755	132327	2
65756	MOUNT BRACKET WELDMENT		SEE AB - 65756	132410	1
65756M	MOUNT BRACKET WELDMENT - MIRROR		SEE AB - 65756M	132411	1
65766	TOW BACK PLATE	A514	SEE PA - 65766	132417	2
65769	HANDLE	T-304	SEE PB - 65769	132419	2
65770	SPACER TUBE	T-304	SEE PA - 65770	132420	2
65851	HANDLE GRIP	POLYUR	SEE PA - 65851	132326	2
66287	TILT STOP SPACER	5052-H32	SEE PA - 66287	132450	2
66336	SPACER INSERT	ASA	SEE PA - 66336	132466	2
66337	U BOLT INSERT	ASA	SEE PA - 66337	132467	4
85868	BUSHING	A514	M16 X 20MM	132427	2
85869	SHAFT COLLAR	T-304	M16	132428	2
91256	HEX CAPSCREW - SS	18-8	M8 X 1.25 X 40	129307	2
91323	HEX CAPSCREW - SS	T-304	M16 X 2 X 70	132429	2
94361	NYLOC HEX NUT - SS	CL A2	M8 X 1.25	129459	2
94399	ALL METAL LOCK NUT - PLATED (STOVER)	CL 10	M22 X 2.5	110573	2
94439	HEXT NUT - SS	T-304	M10 X 1.5	129311	4
94446	NYLOC HEX NUT - A2 SS	A2	M10 X 1.5	129460	4
94447	NYLOC HEX NUT - A2 SS	CL 8	M16 X 2.0	129461	2
94448	NYLOC HEX NUT - A2 SS	CL 8	M12 X 1.75	129462	2
95299	LOCK WASHER - SS	T-304	M16	129543	2
95301	FLAT WASHER - 1/2 SS	T-304	1/2" DIA SAE	104852	2
95309	FLAT WASHER - PLATED	GR. 8	M22	132432	2
95311	FLAT WASHER - ALUM	6061-T6	M10	132468	8
95312	FLAT WASHER - ALUM	6061-T6	M12	132469	4
96246	SOCKET CAP SCREW	T-304	M12 X 1.75 X 80	132433	2
96247	SET SCREW	T-304	M5 X 0.8 X 8MM LONG	132434	2
96248	COUNTER SUNK SCREW	T-304	M4 X 0.7 X 12MM LONG	132435	6
96250	SCREW, PAN, SS, M3 X 0.5 X 8	T-304	M3 X 0.5 X 8MM LONG	132451	4
96825	U-BOLT	T-304	SEE PA - 96825	132436	2
-	ANTI-SEIZE	LUBRICANT	-	-	1

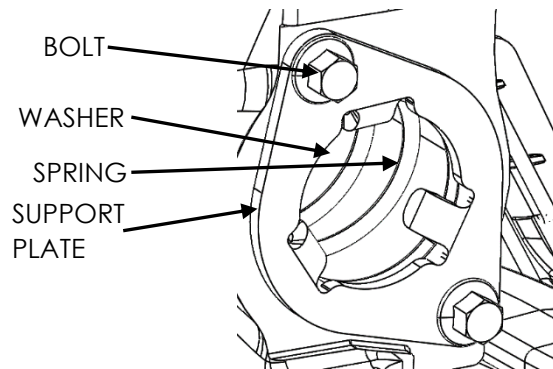
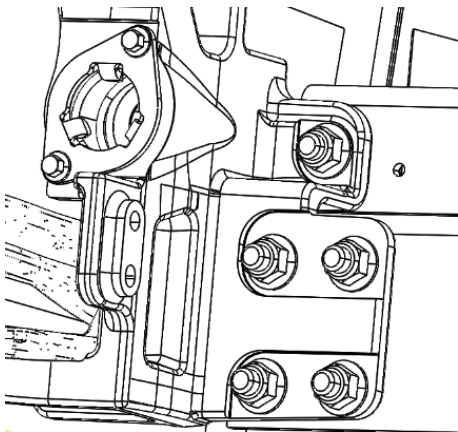


INSTALLATION PROCEDURE

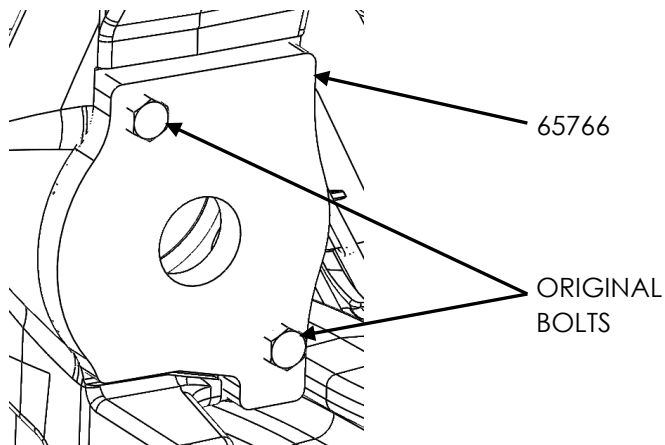
1. REMOVE FRONT TOW RECEIVER COVERS.



2. UNINSTALL THE SPRING, SUPPORT PLATE AND HARDWARE FROM THE BACK OF TOW RECEIVER. KEEP THE BOLTS FOR LATER USE.



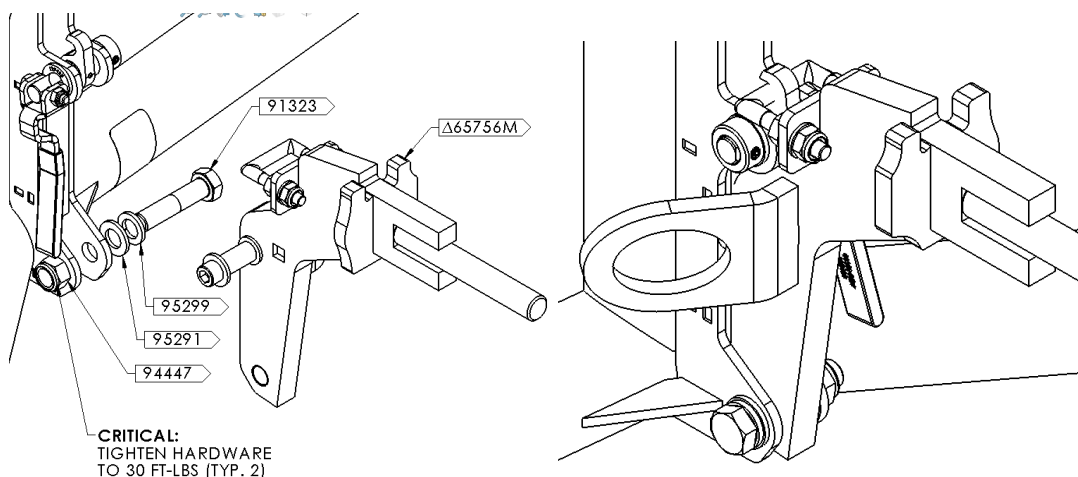
3. INSTALL #65766 ON THE BACK OF BOTH TOW RECEIVERS. RE-USE THE ORIGINAL BOLTS FROM STEP TWO AND TORQUE THEM TO FACTORY SPECIFICATIONS.



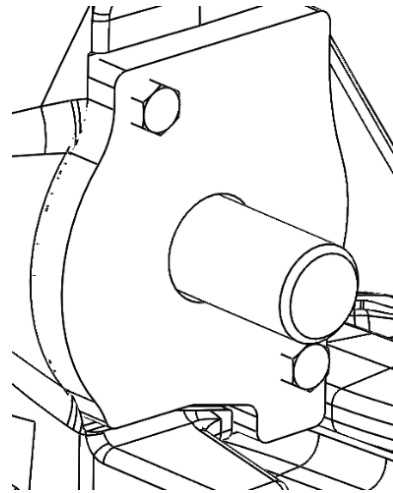
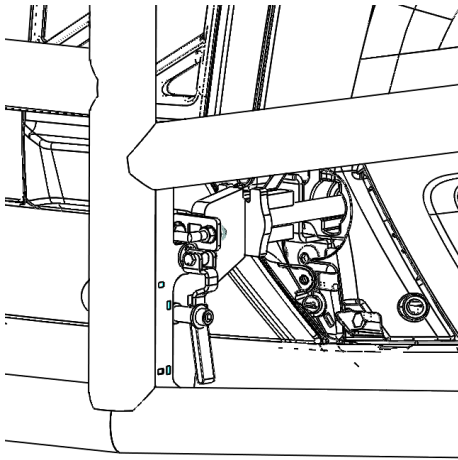
4. INSTALL THE MOUNT BRACKETS ONTO THE GUARD USING THE FOLLOWING:
 - 2 X 91323 (M16 X 2 X 70 STAINLESS STEEL BOLT)
 - 2 X 95299 (M16 STAINLESS STEEL LOCK WASHER)
 - 2 X 95291 (M16 STAINLESS STEEL FLAT WASHER)
 - 2 X 94447 (M16 X 2 STAINLESS STEEL NYLOC NUT)
 - 1X ANTI-SEIZE

CRITICAL: APPLY SUPPLIED ANTI-SEIZE OVER THE BOLTS BEFORE INSTALLING THE NYLOC NUTS TO PREVENT SEIZING OF THE HARDWARE.

TORQUE TO 30 FT-LBS. LOCK THE BRACKETS IN POSITION AND CHECK FOR FREE MOVEMENT. IF THE BRACKETS ARE TOO LOOSE GO TO THE LATCH ADJUSTMENT SHEET FOUND ON THE LAST PAGE OF THIS INSTALLATION GUIDE.



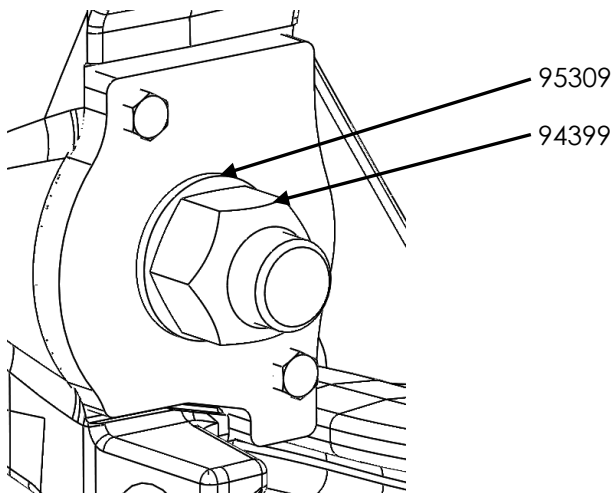
5. INSTALL THE GUARD ONTO THE TRUCK BY INSERTING IT INTO THE TOW RECEIVERS. THE STUD ON THE BACK OF THE MOUNT BRACKET SHOULD GO THROUGH THE HOLE IN THE MOUNT PLATE #65766.



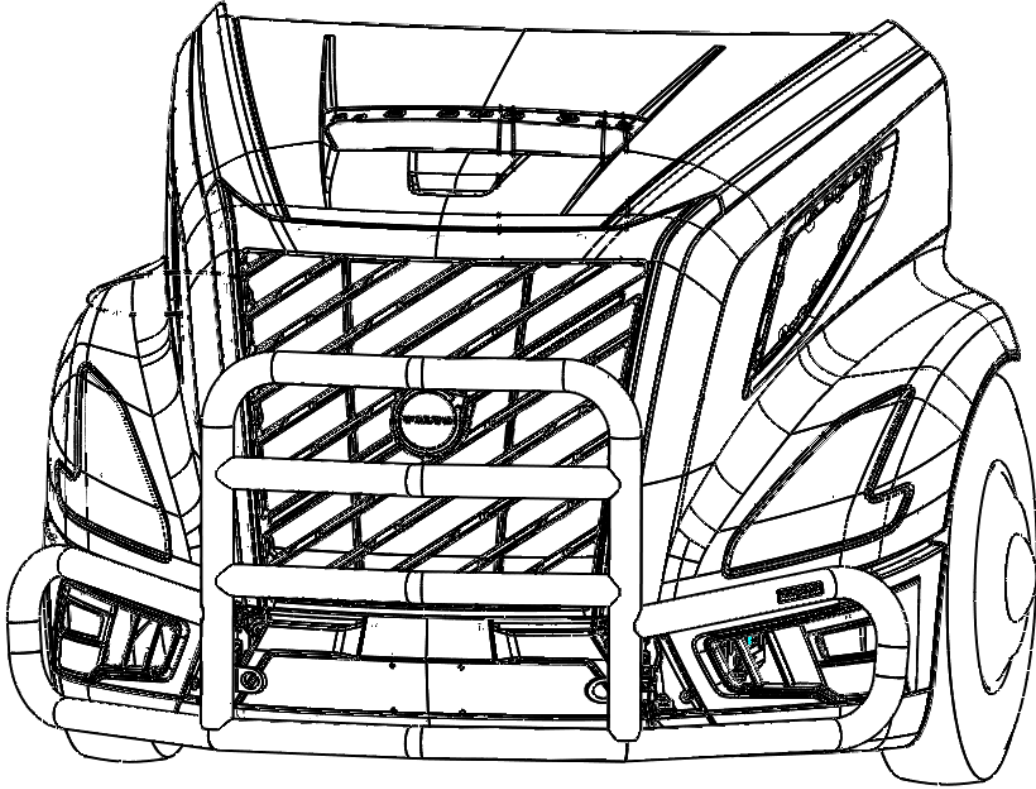
6. OPEN THE GUARD AND THE HOOD OF THE TRUCK. SECURE THE GUARD USING THE FOLLOWING HARDWARE:

- 2 X 94399 (M22 X 2.5 CL 10.9 STOVER NUT)
- 2 X 95309 (M22 FLAT WASHER CL 10.9)

TORQUE TO 290 FT-LBS.



7. CLOSE THE BUMPER AND LOCK IT IN PLACE. CHECK FOR ANY RATTLING AND ADJUST THE LATCH AS NEEDED (SEE LATCH ADJUSTMENT SHEET). THANK YOU FOR CHOOSING MAGNUM.





LATCH ADJUSTMENT

1. SECURE THE BRACKET IN THE LOCKED POSITION BY TWISTING THE HANDLE (65769) AROUND THE BOLT (96246) SO THAT THE CAM (65754) ENGAGES THE UBOLT (96825).
2. FULLY LOOSEN THE FRONT TWO HEX NUTS (94439).
3. TIGHTEN THE BACK TWO NYLOC NUTS (94446) UNTIL THE BRACKET IS FREE OF MOVEMENT.
4. ENSURE THAT THE GUARD IS STILL ABLE TO BE OPENED EASILY BY REVERSING THE OPERATIONS FROM STEP 1. IF THE HANDLE IS TOO DIFFICULT TO MOVE, LOOSEN THE TWO BACK NYLOC NUTS (94446).
5. ONCE AN IDEAL LATCH POSITIONED HAS BEEN REACHED SECURE THE UBOLT (96825) USING THE FRONT TWO HEX NUTS (94439).
6. REPEAT FOR OTHER SIDE OF THE GUARD.

