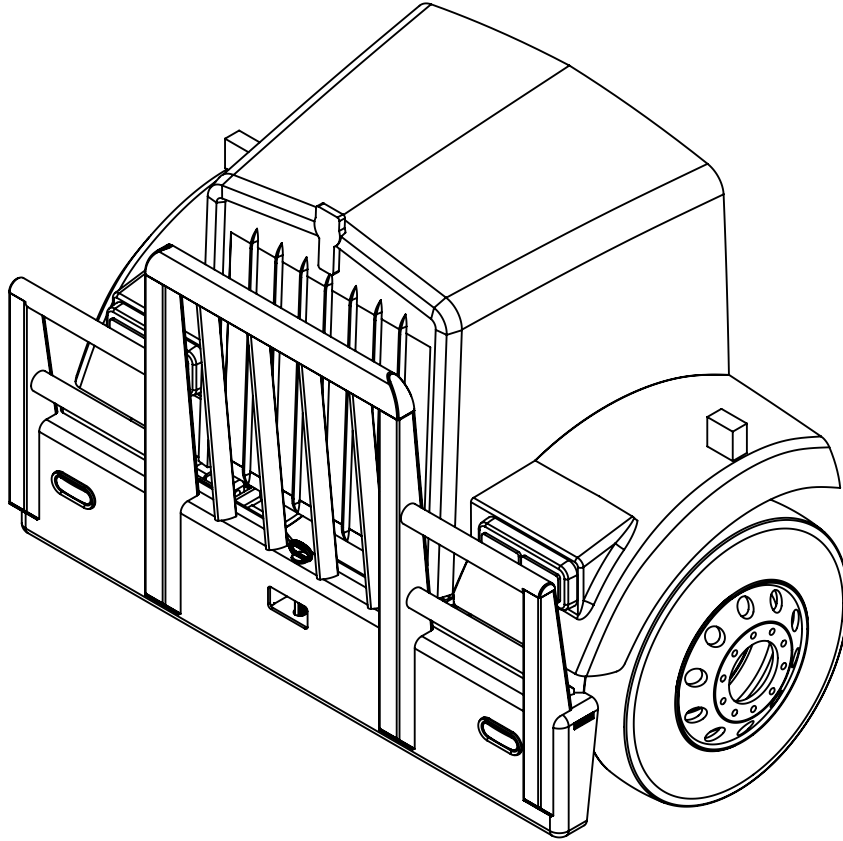




# INSTALLATION GUIDE

MODEL NUMBER: 17061

TRUCK MODEL: 2004+ KENWORTH W900L



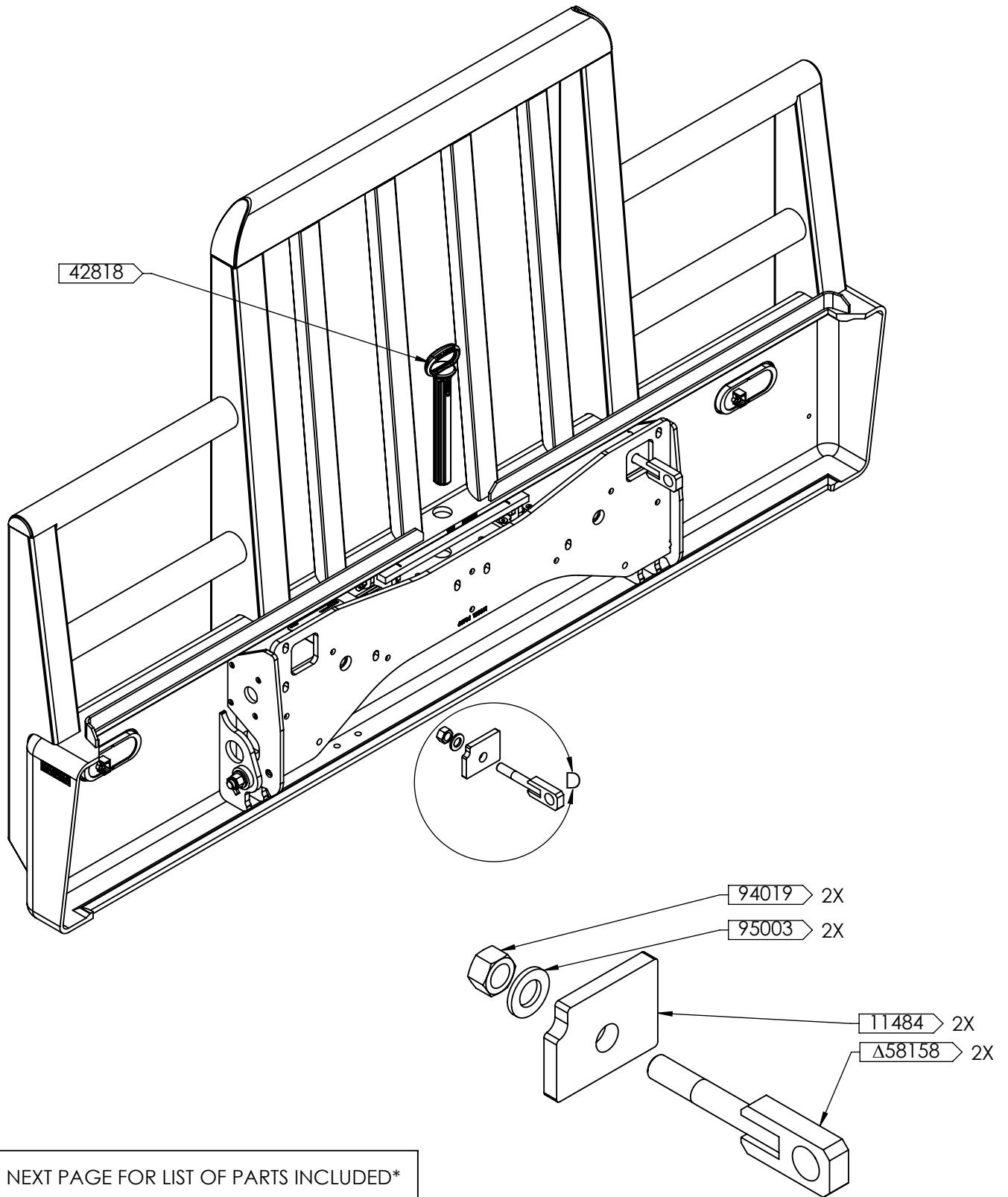
## **IMPORTANT INFORMATION**

- THIS GUIDE IS ONLY APPLICABLE TO PRODUCTS AND TRUCK MODELS SPECIFIED.
- THE CORRECT SIZE AND GRADE OF HARDWARE SPECIFIED IN THIS GUIDE MUST BE USED.
- CHECK ALL MOUNTING POINTS AFTER THE FIRST 5000KM'S IN SERVICE AND PERIODICALLY THERE AFTER. RE-TORQUE IF NECESSARY.
- RECOMMENDED ADDING THREADLOCKER (LOCTITE BLUE 242) TO ALL THREADS BEFORE INSTALLING.
- ALL MAGNUM PRODUCTS MUST BE INSTALLED ACCORDING TO THIS INSTALLATION GUIDE. ANY DEVIATIONS MAY RESULT IN VOID OF WARRANTY.
- ANY ALTERATIONS TO THE PRODUCT MAY RESULT IN VOID OF WARRANTY.

## **SAFETY INFORMATION**

- PROPER PERSONAL PROTECTIVE EQUIPMENT MUST BE WORN WHEN INSTALLING THIS PRODUCT.
- SOME PARTS OF THIS PRODUCT MAY BE HEAVY OR AWKWARD TO HANDLE. USE CAUTION WHEN HANDLING.

## 17061 MOOSE BUMPER



\*SEE NEXT PAGE FOR LIST OF PARTS INCLUDED\*

**DETAIL D**  
SCALE 1 : 4

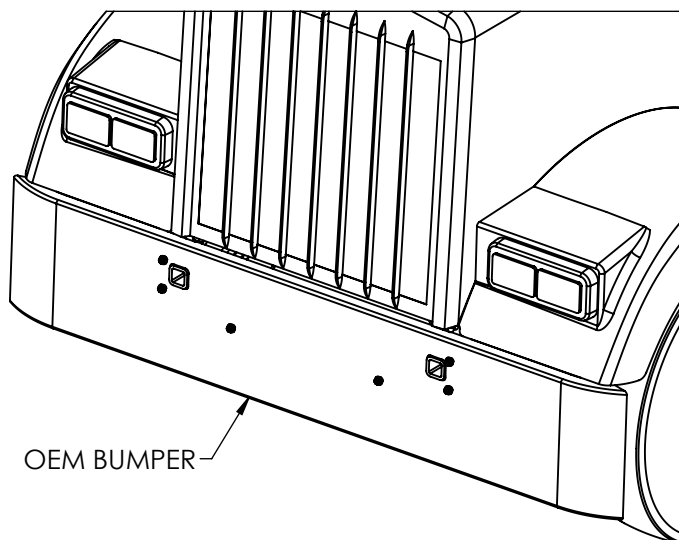


## ASSEMBLY KIT PARTS

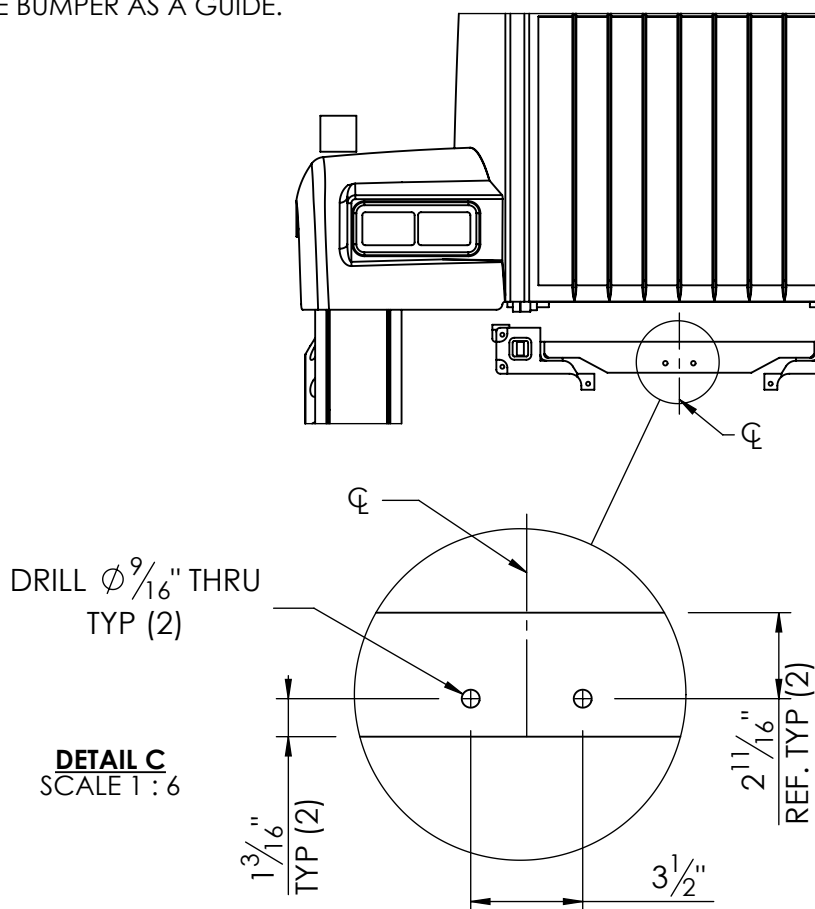
ITEM#	DWG	DESCRIPTION	MAT'L	DIMENSIONS	WT. EA	STOCK #	QTY.
11484	PA	MOUNT WASHER PLATE	44W	SEE PA - 11484	1.6	104593	2
42818	PA	CAST TOWPIN	130-90-09 CAST IRON	SEE PA - 42818	5.4	125613	1
58158	AA	TOW MOUNT ASSEMBLY		SEE AA - 58158	1.5	129927	2
94019		HEX NUT - PLATED	GR. 2	3/4" NC	.12	101431	2
95003		FLAT WASHER - PLATED	GR. 8	3/4" DIA SAE	.055	102169	2

## INSTALLATION PROCEDURE

1. UNINSTALL THE OEM BUMPER FROM THE TRUCK.



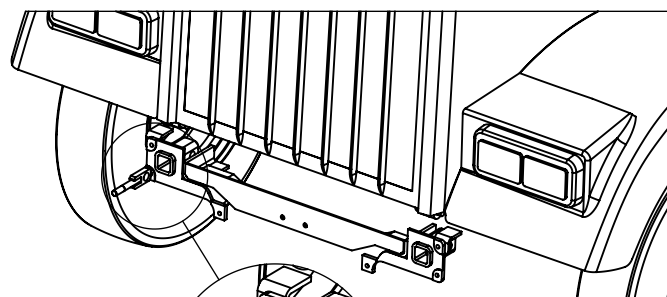
2. DRILL TWO HOLES THROUGH THE TRUCK FRAME AS SHOWN IN THE FIGURE TO THE RIGHT. THESE HOLES CAN ALSO BE DRILLED WHEN INSTALLING THE BUMPER USING THE HOLES IN THE STEEL ASSEMBLY OF THE BUMPER AS A GUIDE.





# INSTALLATION PROCEDURE

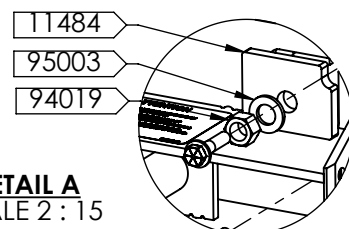
3. INSTALL THE TOW MOUNT ASSEMBLIES **Δ58158** INTO THE TOW RECEIVERS. SLIDE THE PINS FROM THE FACTORY TOW YOKES THROUGH THE TRUCK FRAME AND TOW MOUNT ASSEMBLIES.



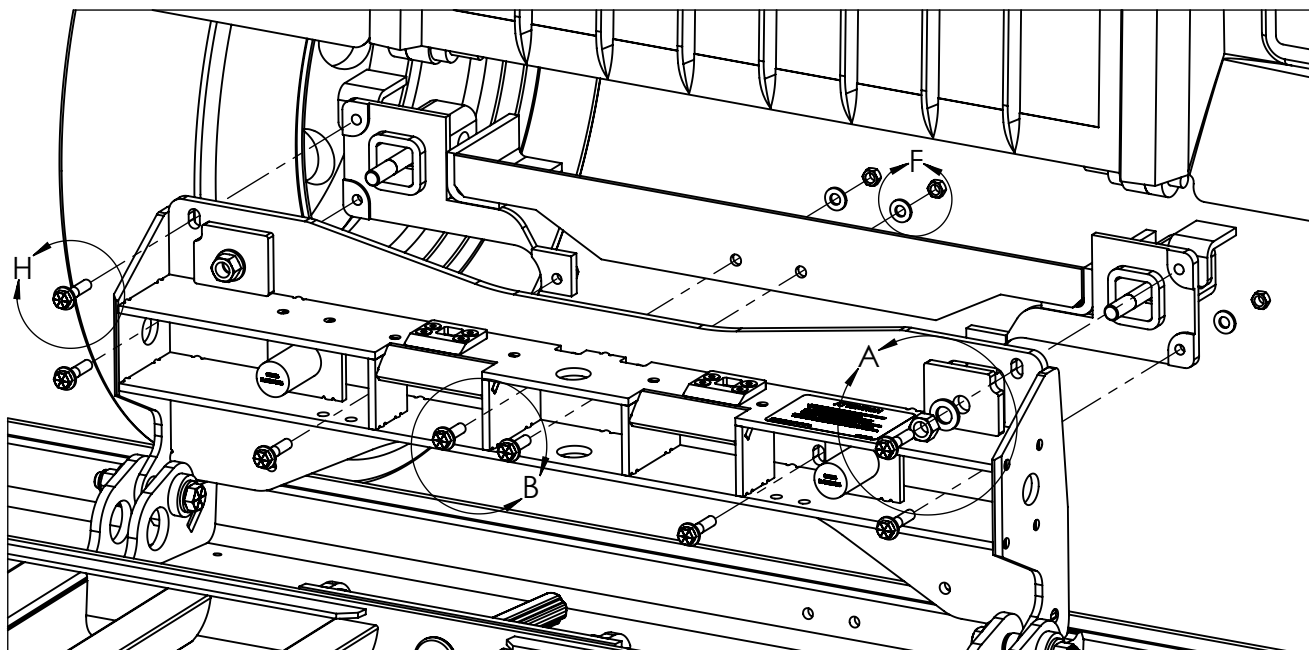
**Δ58158**  
**DETAIL G**  
SCALE 1 : 12  
SLIDE PINS THROUGH HERE

4. OPEN THE BUMPER AND ATTACH THE STEEL ASSEMBLY TO THE TRUCK FRAME. USE THE FOLLOWING HARDWARE TO ATTACH THE GUARD:

- 2 X (1/2" NC X 1 3/4" GR.8 HEX BOLT ) (NOT SUPPLIED)
- 6 X (1/2" NC X 2 1/4" GR.8 HEX BOLT ) (NOT SUPPLIED)
- 16 X (1/2" FLAT WASHER GR.8) (NOT SUPPLIED)
- 8 X (1/2" STOVER NUT GR.C) (NOT SUPPLIED)



TORQUE TO 80 FT-LBS (LUBRICATED) / 110 FT-LBS (DRY).



1/2" NC X 1 3/4" GR.8 HEX BOLT TYP (2) (NOT SUPPLIED)  
**DETAIL B**  
SCALE 2 : 15



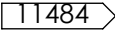
1/2" NC X 2 1/4" GR.8 HEX BOLT TYP (6) (NOT SUPPLIED)  
**DETAIL H**  
SCALE 2 : 15

1/2" NC STOVER NUT GR.C TYP (8) (NOT SUPPLIED)  
1/2" FLAT WASHER GR.8 TYP (16) (NOT SUPPLIED)  
**DETAIL F**  
SCALE 2 : 15



## INSTALLATION PROCEDURE

5. SECURE THE TOW MOUNT ASSEMBLIES USING THE SUPPLIED HARDWARE:

- 2 X  NUTS
- 2 X  WASHERS
- 2 X  MOUNT WASHER PLATES

TORQUE TO 130 FT-LBS (LUBRICATED) / 175 FT-LBS (DRY).

CLOSE THE BUMPER WITH CARE AND:

- A.** REVIEW FOR ANY INTERFERENCES THAT MIGHT OCCUR.
- B.** CHECK FOR ANY UNWANTED RATTLES OR MOVEMENTS OF THE BUMPER.

IF YOU HAVE ANY QUESTIONS OR CONCERNS PLEASE REACH OUT TO US.

IF EVERYTHING LOOKS GOOD, THE INSTALL IS COMPLETE, BUT PLEASE REMEMBER TO CHECK FOR RATTLES AND UNWANTED MOVEMENTS PERIODICALLY. IF LATCH REQUIRES ADJUSTMENTS, INSTRUCTIONS CAN BE FOUND ON OUR WEBSITE (<https://magnumtrailer.com/resources/moose-bumper-maintenance-service-instructions/>).

THANK YOU FOR CHOOSING MAGNUM.