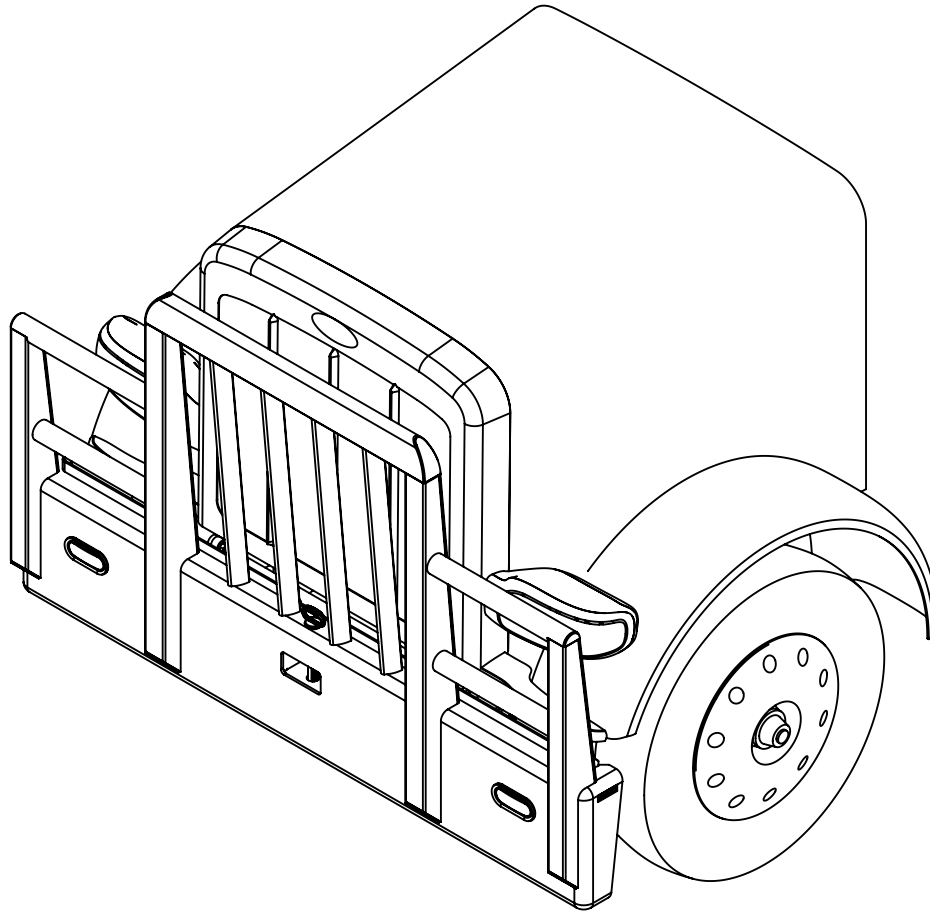




# INSTALLATION GUIDE

MODEL NUMBER: 17058

TRUCK MODEL: 2007+ PETERBILT 365/367/388/389



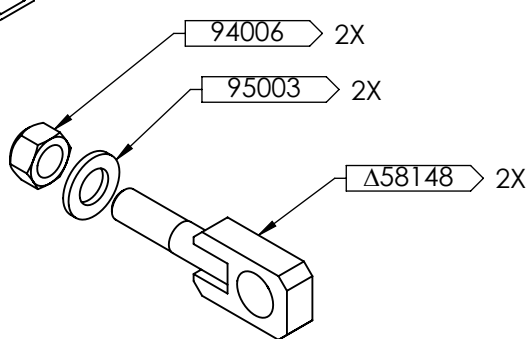
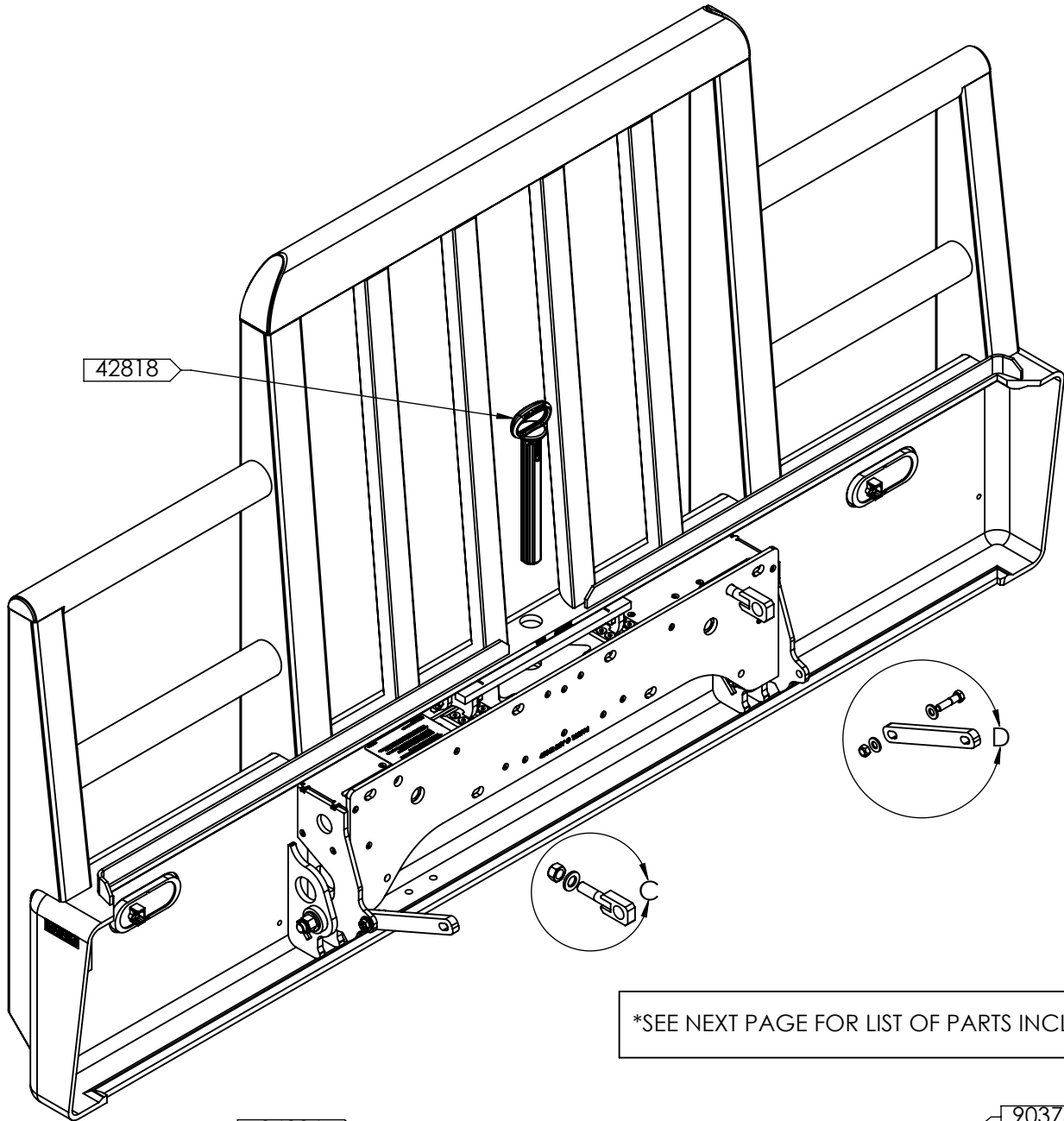
## **IMPORTANT INFORMATION**

- THIS GUIDE IS ONLY APPLICABLE TO PRODUCTS AND TRUCK MODELS SPECIFIED.
- THE CORRECT SIZE AND GRADE OF HARDWARE SPECIFIED IN THIS GUIDE MUST BE USED.
- CHECK ALL MOUNTING POINTS AFTER THE FIRST 5000KM'S IN SERVICE AND PERIODICALLY THERE AFTER. RE-TORQUE IF NECESSARY.
- RECOMMENDED ADDING THREADLOCKER (LOCTITE BLUE 242) TO ALL THREADS BEFORE INSTALLING.
- ALL MAGNUM PRODUCTS MUST BE INSTALLED ACCORDING TO THIS INSTALLATION GUIDE. ANY DEVIATIONS MAY RESULT IN VOID OF WARRANTY.
- ANY ALTERATIONS TO THE PRODUCT MAY RESULT IN VOID OF WARRANTY.

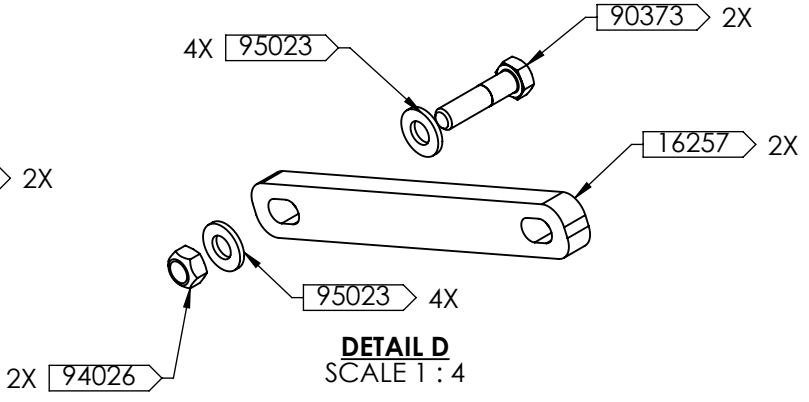
## **SAFETY INFORMATION**

- PROPER PERSONAL PROTECTIVE EQUIPMENT MUST BE WORN WHEN INSTALLING THIS PRODUCT.
- SOME PARTS OF THIS PRODUCT MAY BE HEAVY OR AWKWARD TO HANDLE. USE CAUTION WHEN HANDLING.

**17058 MOOSE BUMPER**



**DETAIL C**  
SCALE 1 : 4



**DETAIL D**  
SCALE 1 : 4

\*SEE NEXT PAGE FOR LIST OF PARTS INCLUDED\*

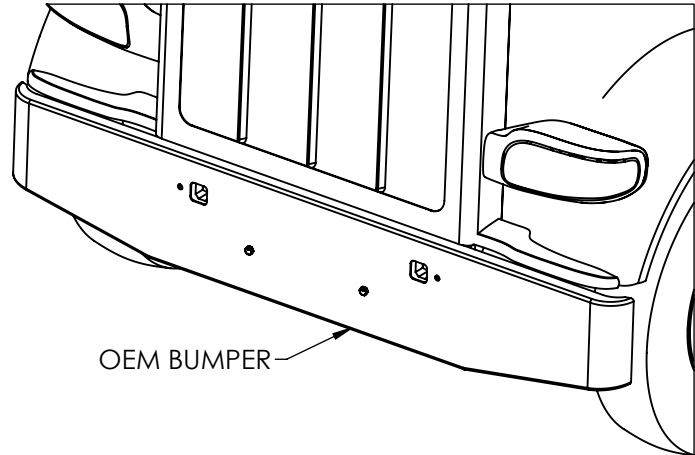


## ASSEMBLY KIT PARTS

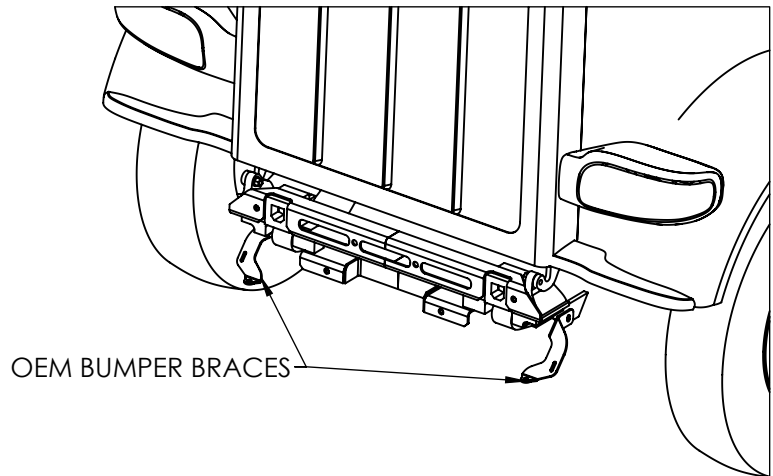
ITEM#	DWG	DESCRIPTION	MAT'L	DIMENSIONS	WT. EA	STOCK #	QTY.
16257	PA	BRACE	44W	SEE PA - 16257	2.	106298	2
42818	PA	CAST TOWPIN	130-90-09 CAST IRON	SEE PA - 42818	5.4	125613	1
58148	AA	TOW MOUNT ASSEMBLY		SEE AA - 58148	1.1	129932	2
90373		HEX HEAD BOLT - PLATED	GR. 8	1/2" NC X 2"	.15	101765	2
94006		STOVER NUT - PLATED	GR. C	3/4" NC	.12	101477	2
94026		STOVER NUT - PLATED	GR. C	1/2" NC	.032	101475	2
95003		FLAT WASHER - PLATED	GR. 8	3/4" DIA SAE	.055	102169	2
95023		FLAT WASHER - PLATED	GR. 8	1/2" DIA SAE	.024	102167	4

## INSTALLATION PROCEDURE

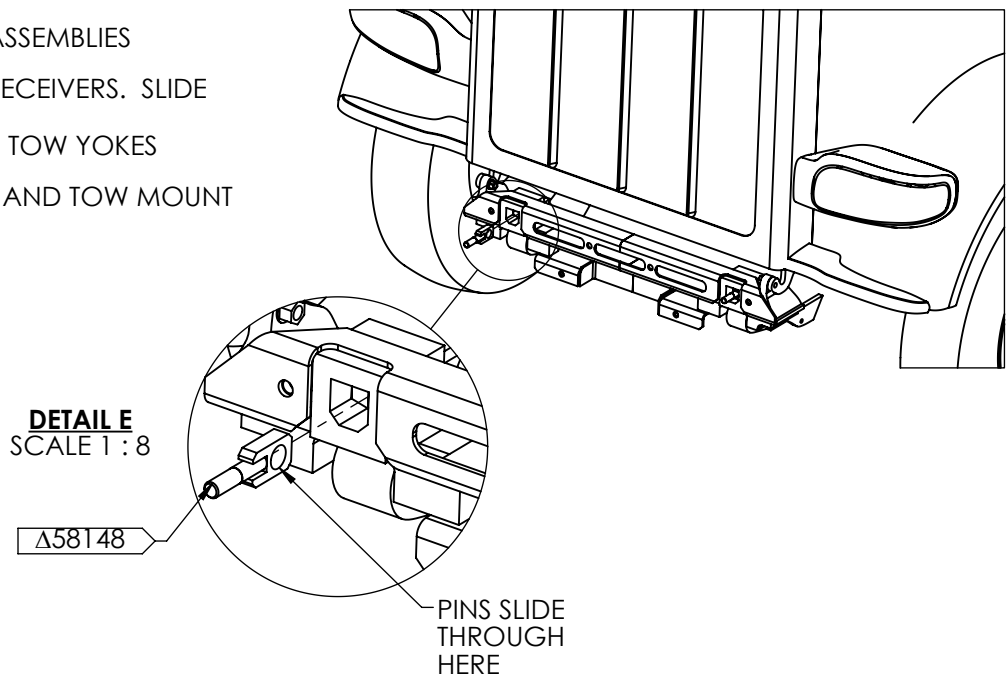
1. UNINSTALL THE OEM BUMPER FROM THE TRUCK .



2. UNINSTALL THE OEM BUMPER BRACES FROM TRUCK.



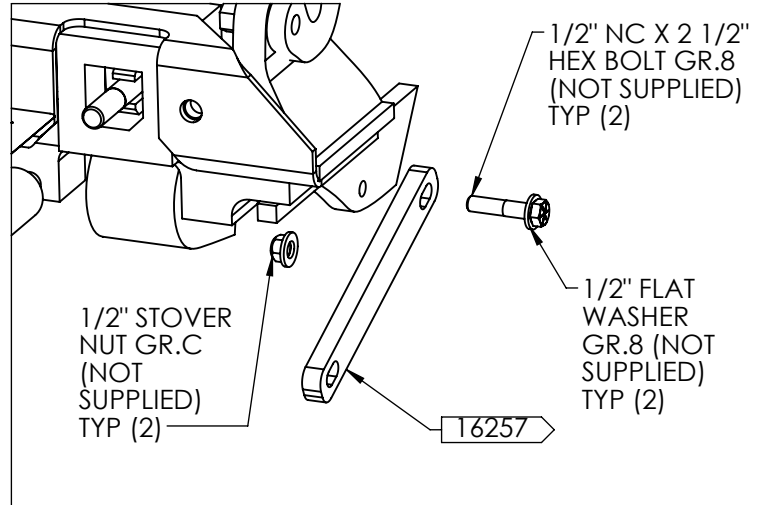
3. INSTALL THE TOW MOUNT ASSEMBLIES **Δ58148** INTO THE TOW RECEIVERS. SLIDE THE PINS FROM THE FACTORY TOW YOKES THROUGH THE TRUCK FRAME AND TOW MOUNT ASSEMBLIES.



# INSTALLATION PROCEDURE

4. SECURE THE BRACE **T6257** TO BOTH SIDES OF THE TRUCK WHERE THE OEM BUMPER BRACES WERE TAKEN OFF IN STEP 2. USE THE FOLLOWING HARDWARE:

- 2 X (1/2" NC X 2 1/2" HEX BOLT GR.8) (NOT SUPPLIED)
  - 4 X (1/2" FLAT WASHER GR.8) (NOT SUPPLIED)
  - 2 X (1/2" STOVER NUT GR.C) (NOT SUPPLIED)
- LEAVE BRACE LOOSE FOR ALIGNMENT WITH THE BUMPER INSTALL.

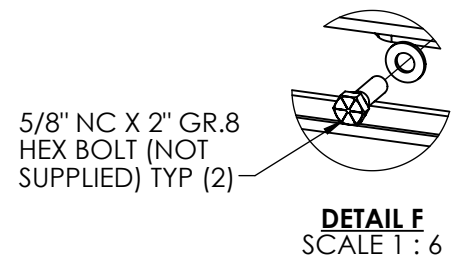
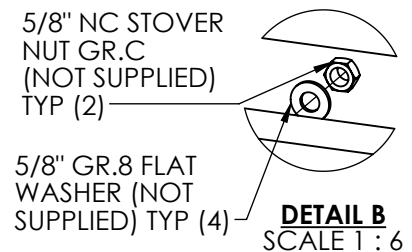
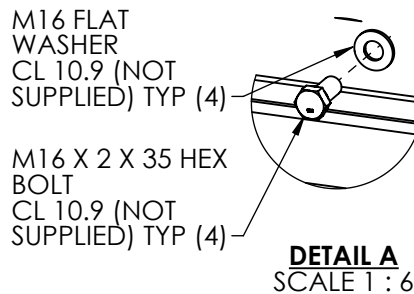
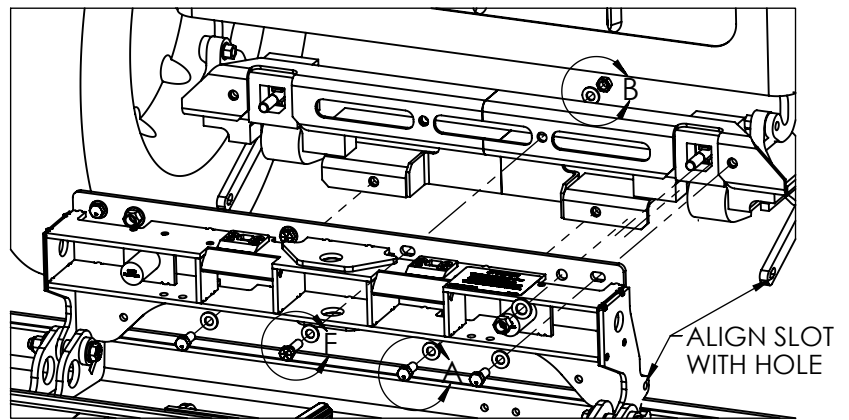


5. OPEN THE BUMPER AND ATTACH THE STEEL ASSEMBLY TO THE TRUCK FRAME. USE THE FOLLOWING HARDWARE:

- 4 X (M16 X 2 X 35 HEX BOLTS CL 10.9) (NOT SUPPLIED)
- 4 X (M16 FLAT WASHER CL 10.9) (NOT SUPPLIED)
- 2 X (5/8" NC X 2" HEX BOLT GR.8) (NOT SUPPLIED)
- 4 X (5/8" FLAT WASHER GR.8) (NOT SUPPLIED)
- 2 X (5/8" STOVER NUT GR.C) (NOT SUPPLIED)

TORQUE TO 159 FT-LBS (LUBRICATED) / 212 FT-LBS (DRY).



ENSURE THAT THE SLOT IN THE BRACE ALIGNS WITH THE HOLE ON THE INSIDE FACE OF THE STEEL ASSEMBLY (SEE NEXT SHEET FOR MORE DETAIL).



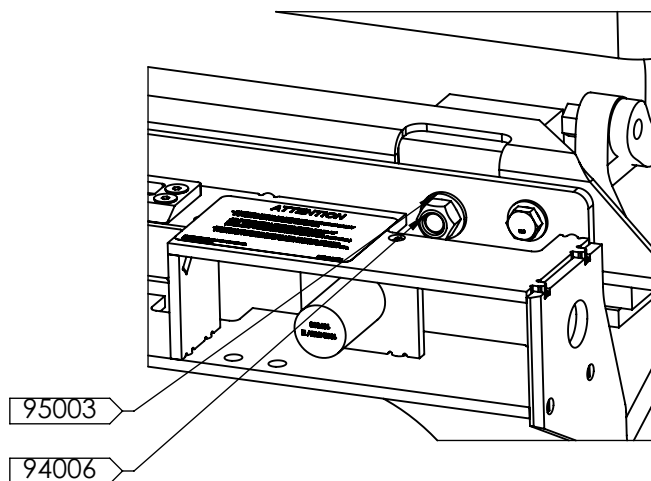


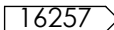
## INSTALLATION PROCEDURE

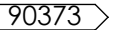
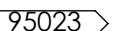
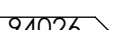
6. SECURE THE TOW MOUNT ASSEMBLIES USING THE FOLLOWING SUPPLIED HARDWARE:

- 2 X  NUTS
- 2 X  WASHERS

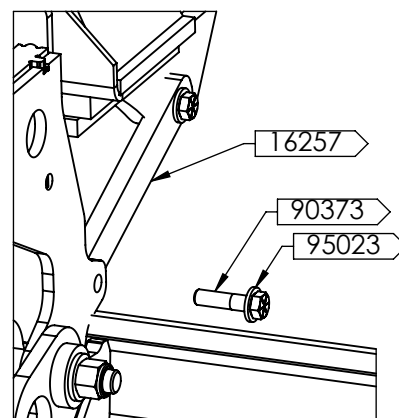
TORQUE TO 200 FT-LBS (LUBRICATED) / 260 FT-LBS (DRY).



7. SECURE BOTH BRACES  TO THE BUMPER USING THE FOLLOWING SUPPLIED HARDWARE:

- 2 X  BOLTS
- 4 X  WASHERS
- 2 X  NUTS

TORQUE ALL BRACE HARDWARE TO 80 FT-LBS (LUBRICATED) / 110 FT-LBS (DRY).



CLOSE THE BUMPER WITH CARE AND:

- A.** REVIEW FOR ANY INTERFERENCES THAT MIGHT OCCUR.
- B.** CHECK FOR ANY UNWANTED RATTLES OR MOVEMENTS OF THE BUMPER.

IF YOU HAVE ANY QUESTIONS OR CONCERNS PLEASE REACH OUT TO US.

IF EVERYTHING LOOKS GOOD, THE INSTALL IS COMPLETE, BUT PLEASE REMEMBER TO CHECK FOR RATTLES AND UNWANTED MOVEMENTS PERIODICALLY.  
THANK YOU FOR CHOOSING MAGNUM.

