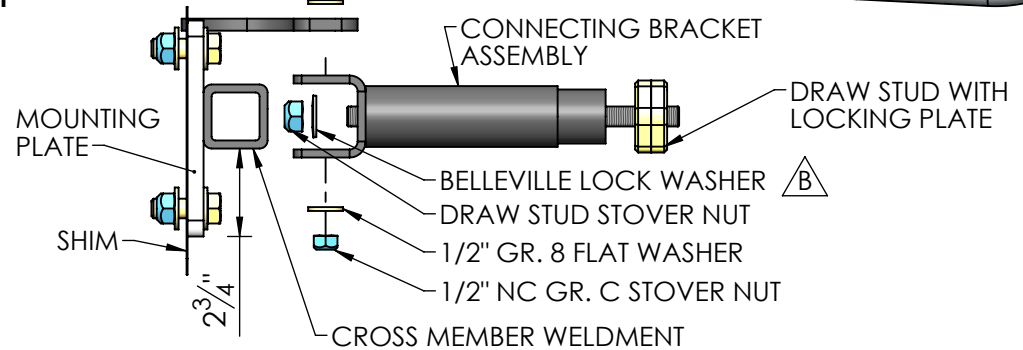
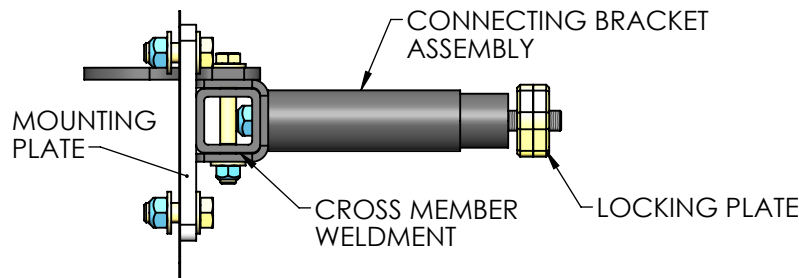
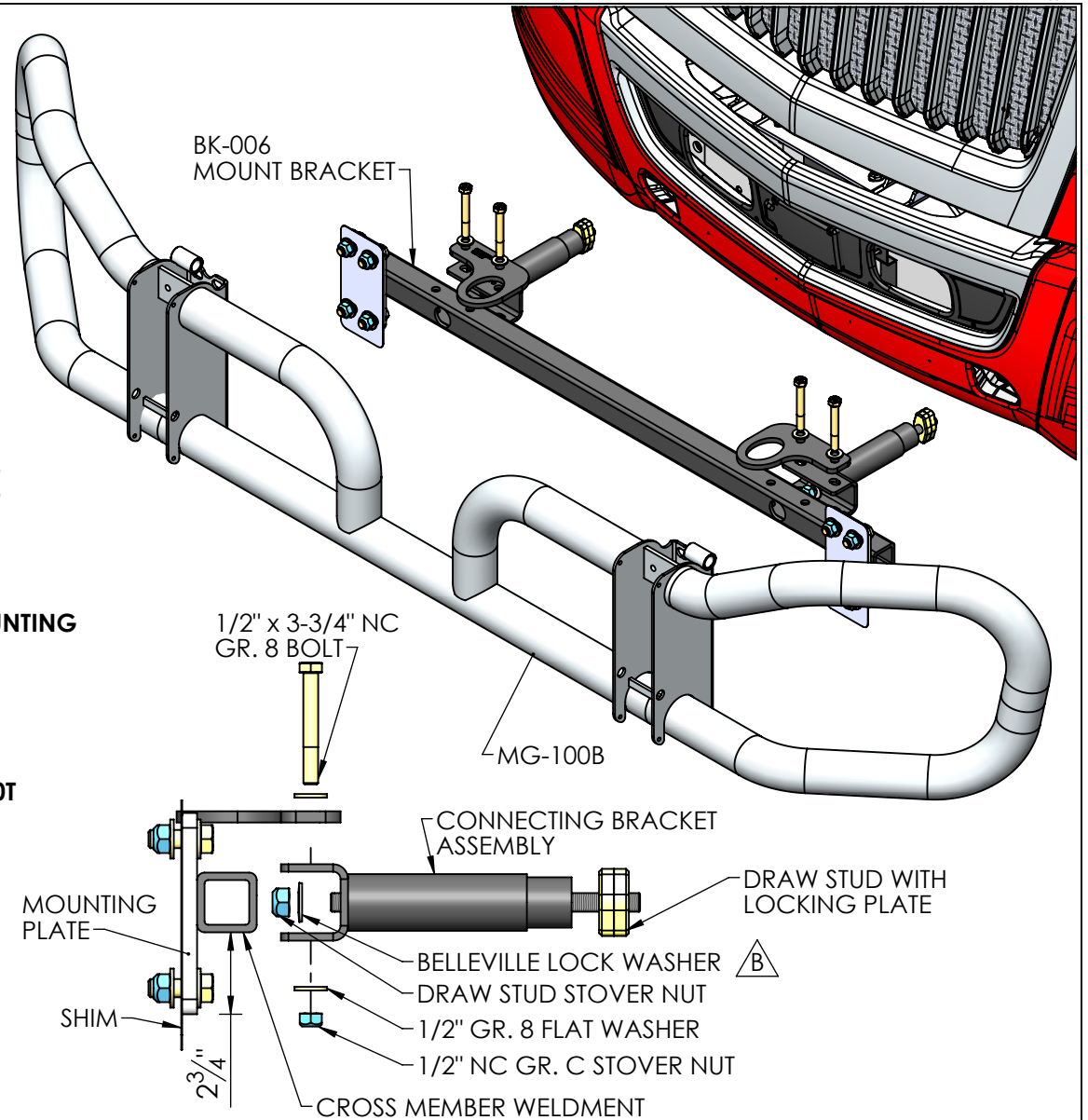


INSTALLING MG-100B/200B/300B

- 1) ORIENTATE MOUNT BRACKET SO THAT IT MATCHES THE ORIENTATION OF THE FIGURE TO THE RIGHT.
- 2) INSERT LOCKING PLATE ASSEMBLY INTO THE CONNECTING BRACKET ASSEMBLY. ROTATE THE LOCKING PLATE SO THAT LONGEST SIDE IS FACING HORIZONTALLY.
- 3) INSERT THE CONNECTING BRACKET ASSEMBLY INTO THE TOW SOCKET AND TURN THE DRAW STUD A QUARTER TURN USING A FLAT HEAD SCREWDRIVER.
- 4) PULL THE DRAW STUD MAKING SURE THE LOCKING PLATE IS POSITIONED CORRECTLY IN THE TOW SOCKET.
- 5) TIGHTEN THE DRAW STUD STOVER NUT WITH A BELLEVILLE WASHER TO 128 FT-LBS.
- 6) TIGHTEN 1/2" HARDWARE SO THAT THE CONNECTING BRACKET ASSEMBLY CLAMPS DOWN ON THE CROSS MEMBER WELDMENT UNTIL THERE IS NO FREE MOVEMENT.
- 7) ATTACH THE BUMPER GUARD TO THE MOUNTING BRACKETS USING THE BOTTOM TWO ROWS OF SLOTS ON THE GUARD, SHIMS SHOULD BE PLACED BETWEEN THE GUARD AND THE MOUNTING BRACKETS.
HARDWARE: 5/8" NC X 1 3/4" BOLT, 5/8" WASHER & 5/8" STOVER NUT (8 PLACES)
- 8) THE GUARD IS INSTALLED. THE HOOD CAN NOW BE CLOSED. REFER TO DRAWING #54268 FOR INSTALLING THE MG-200T/300T IF REQUIRED.



MAGNUM TRAILER & EQUIPMENT INC.



FRACTIONS CHART

1/32	.03125	9/32	.28125	17/32	.53125	25/32	.78125
1/16	.0625	5/16	.3125	9/16	.5625	13/16	.8125
3/32	.09375	11/32	.34375	19/32	.59375	27/32	.84375
1/8	.125	3/8	.375	5/8	.625	7/8	.875
5/32	.15625	13/32	.40625	21/32	.65625	29/32	.90625
3/16	.1875	7/16	.4375	11/16	.6875	15/16	.9375
7/32	.21875	15/32	.46875	23/32	.71875	31/32	.96875
1/4	.25	1/2	.5	3/4	.75		

UNLESS OTHERWISE SPECIFIED DIMENSIONS ARE IN INCHES TOLERANCES ARE:

FRACTIONS	ANGLES
+/- 1/16"	+/- 1°
.XX"	.XXX"
+/- 0.03"	+/- 0.005"

DIMENSIONS TO SHARP POINTS

SHEET NAME BUMPER GUARD		TITLE MODULAR GUARD ON 2017 INT. PROSTAR LT			
CURRENT CUSTOMER		STOCK NUMBER		VENDOR NUMBER	
WO#		DRAWN BY MD		DRAWN DATE 3/16/2021	
SCALE 1:4		CHECKED BY LS		CHECKED DATE 3/22/2021	
MODELLER MD		DRAWING NUMBER AA-53444		REV. B	
				WEIGHT - LB. 106.	
				NUMBER OF SHEETS 1	