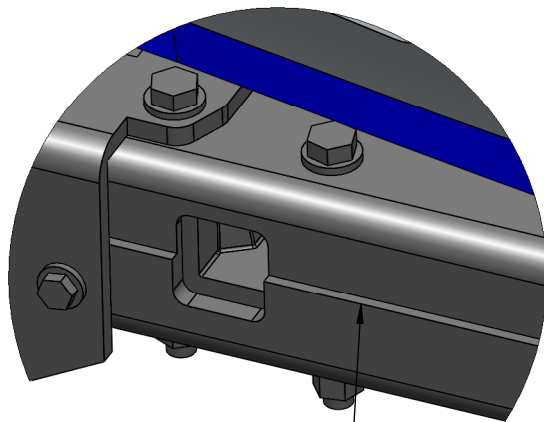
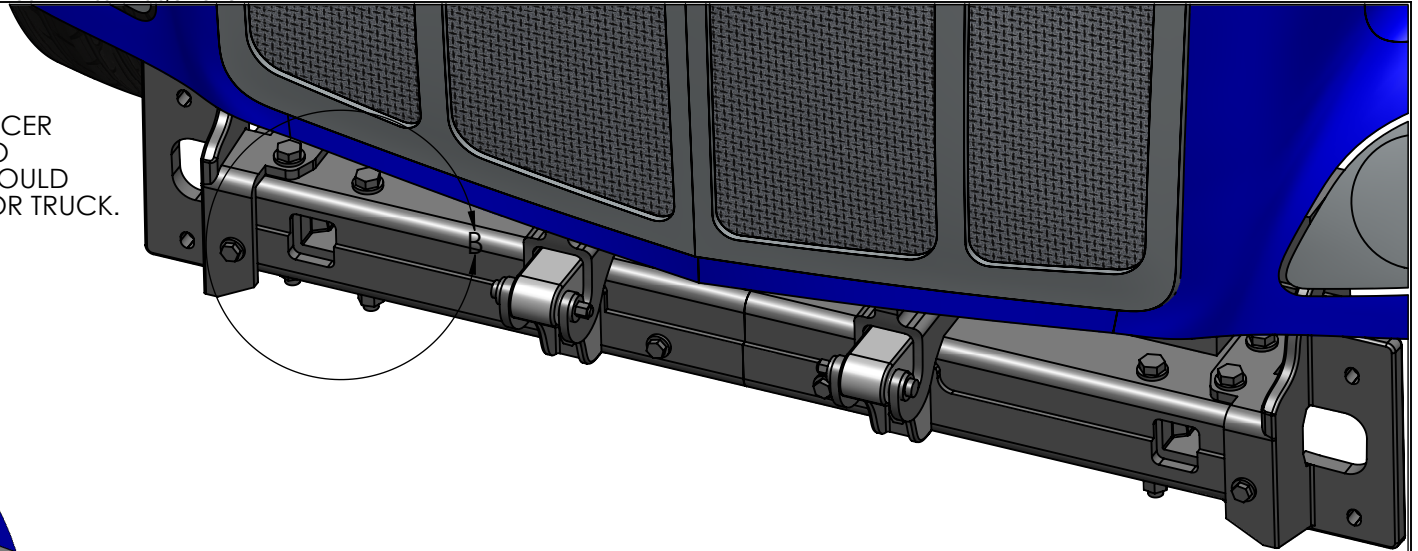


**ATTENTION:**

CHECK THE CROSS MEMBER OF THE TRUCK IN ORDER TO DETERMINE WHETHER THE SPACER PLATE IS REQUIRED. CONTRARY TO THE TWO CONFIGURATIONS OUTLINED IN DETAIL B COULD RESULT IN DAMAGE TO THE BUMPER AND/OR TRUCK.

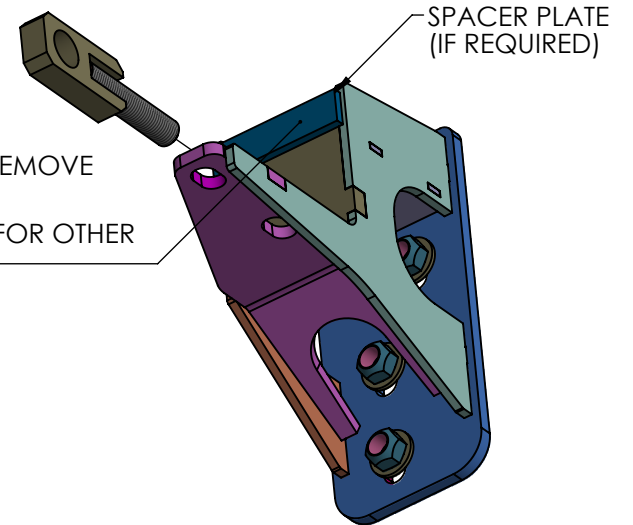


DETAIL B  
SCALE 1 : 4


1. INSPECT CROSS MEMBER FOR RIDGE.  
IF THERE IS A RIDGE THE SPACER PLATE IS REQUIRED.

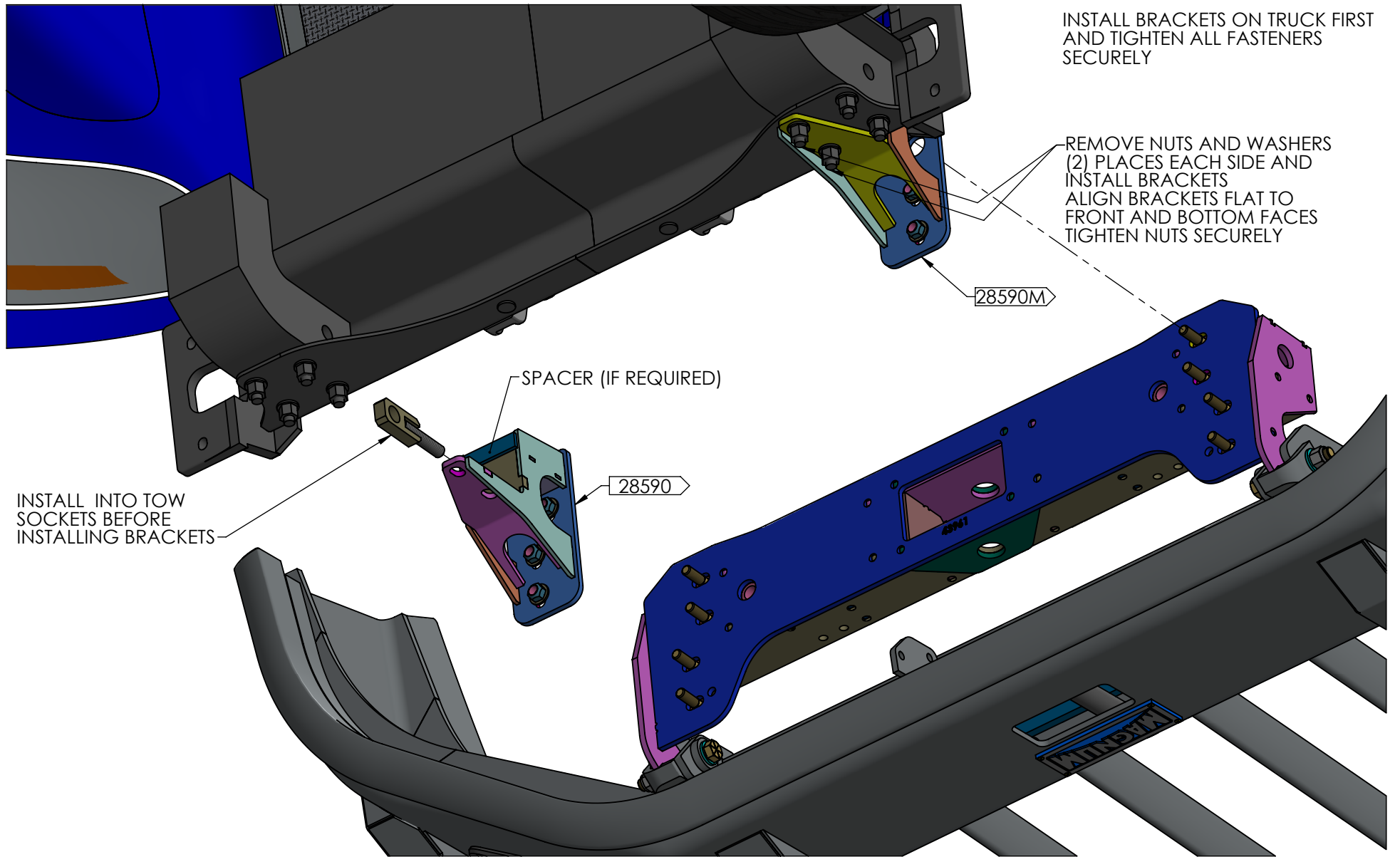
2. IF TRUCK CROSS MEMBER IS FLAT, SPACER IS NOT REQUIRED.

IF SPACER IS NOT REQUIRED:  
GRIND OFF TACK WELDS AND REMOVE SPACER. PAINT BARE METAL TO PREVENT CORROSION. REPEAT FOR OTHER MOUNTING BRACKET



MOUNTING BRACKET ASSEMBLY

<b>MAGNUM TRAILER &amp; EQUIPMENT INC.</b> 	<b>FRACTIONS CHART</b>				UNLESS OTHERWISE SPECIFIED DIMENSIONS ARE IN INCHES TOLERANCES ARE:		SHEET NAME <b>SPACER PLATE</b>		TITLE <b>17203 BUMPER ON 2013 PETERBILT 579</b>		
	1/32 .03125	9/32 .28125	17/32 .53125	25/32 .78125	FRACTIONS    ANGLES		CURRENT CUSTOMER		STOCK NUMBER	VENDOR NUMBER	WEIGHT - LB.
	1/16 .0625	5/16 .3125	9/16 .5625	13/16 .8125	+/- 1/16"    +/- 1°		WO#		DRAWN BY LS	DRAWN DATE 2017-11-02	REV. A
	3/32 .09375	11/32 .34375	19/32 .59375	27/32 .84375	.XX"    .XXX"		SCALE 1:8		MODELLER	DRAWING NUMBER <b>AA-41457</b>	NUMBER OF SHEETS 2
1/8 .125	3/8 .375	5/8 .625	7/8 .875	+/- 0.03"    +/- 0.005"		DIMENSIONS TO SHARP POINTS					
5/32 .15625	13/32 .40625	21/32 .65625	29/32 .90625								
3/16 .1875	7/16 .4375	11/16 .6875	15/16 .9375								
7/32 .21875	15/32 .46875	23/32 .71875	31/32 .96875								
1/4 .25	1/2 .5	3/4 .75									



**MAGNUM TRAILER & EQUIPMENT INC.**



**FRACTIONS CHART**

1/32	.03125	9/32	.28125	17/32	.53125	25/32	.78125
1/16	.0625	5/16	.3125	9/16	.5625	13/16	.8125
3/32	.09375	11/32	.34375	19/32	.59375	27/32	.84375
1/8	.125	3/8	.375	5/8	.625	7/8	.875
5/32	.15625	13/32	.40625	21/32	.65625	29/32	.90625
3/16	.1875	7/16	.4375	11/16	.6875	15/16	.9375
7/32	.21875	15/32	.46875	23/32	.71875	31/32	.96875
1/4	.25	1/2	.5	3/4	.75		

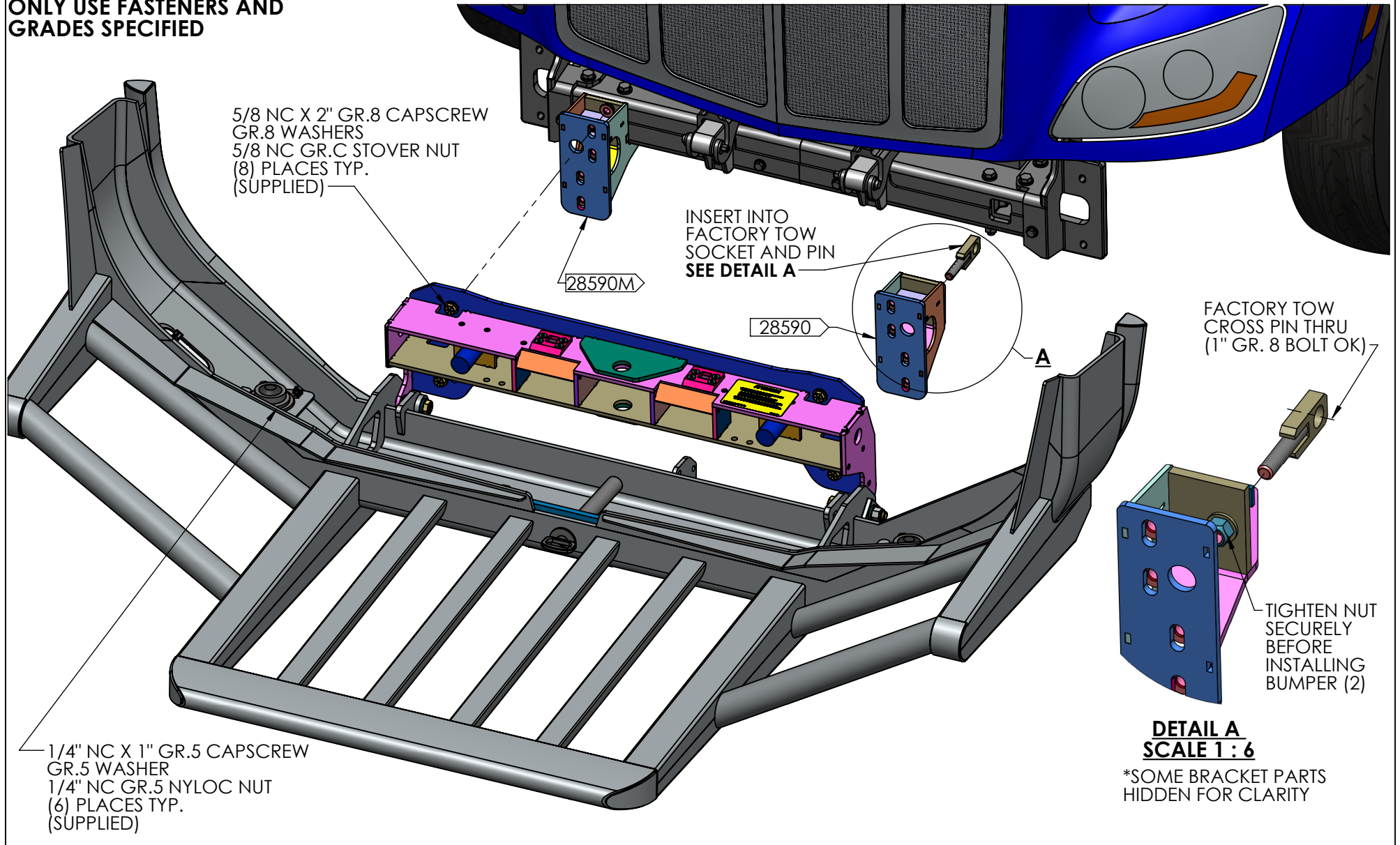
UNLESS OTHERWISE SPECIFIED DIMENSIONS ARE IN INCHES TOLERANCES ARE:

FRACTIONS	ANGLES
+/- 1/16"	+/- 1°
.XX"	.XXX"
+/- 0.03"	+/- 0.005"

DIMENSIONS TO SHARP POINTS

SHEET NAME		TITLE	
BRACKET INSTALL		17203 BUMPER ON 2013 PETERBILT 579	
CURRENT CUSTOMER	STOCK NUMBER	VENDOR NUMBER	WEIGHT - LB.
WO#	DRAWN BY	DRAWN DATE	REV.
	LS	2017-11-02	A
SCALE	MODELLER	DRAWING NUMBER	NUMBER OF SHEETS
1:8		AA-41457	2

**ONLY USE FASTENERS AND GRADES SPECIFIED**



**DETAIL A  
SCALE 1:6**

\*SOME BRACKET PARTS HIDDEN FOR CLARITY

**MAGNUM TRAILER & EQUIPMENT INC.**



**FRACTIONS CHART**

1/32	.03125	9/32	.28125	17/32	.53125	25/32	.78125
1/16	.0625	5/16	.3125	9/16	.5625	13/16	.8125
3/32	.09375	11/32	.34375	19/32	.59375	27/32	.84375
1/8	.125	3/8	.375	5/8	.625	7/8	.875
5/32	.15625	13/32	.40625	21/32	.65625	29/32	.90625
3/16	.1875	7/16	.4375	11/16	.6875	15/16	.9375
7/32	.21875	15/32	.46875	23/32	.71875	31/32	.96875
1/4	.25	1/2	.5	3/4	.75		

UNLESS OTHERWISE SPECIFIED DIMENSIONS ARE IN INCHES TOLERANCES ARE:

FRACTIONS	ANGLES
+/- 1/16"	+/- 1°
.XX"	.XXX"
+/- 0.03"	+/- 0.005"

DIMENSIONS TO SHARP POINTS

SHEET NAME		TITLE	
BUMPER INSTALL		17203 BUMPER ON 2013 PETERBILT 579	
CURRENT CUSTOMER	STOCK NUMBER	VENDOR NUMBER	WEIGHT - LB.
WO#	DRAWN BY	DRAWN DATE	REV.
	LS	2017-11-02	A
SCALE	MODELLER	DRAWING NUMBER	NUMBER OF SHEETS
1:12		AA-41457	2