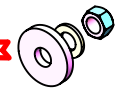
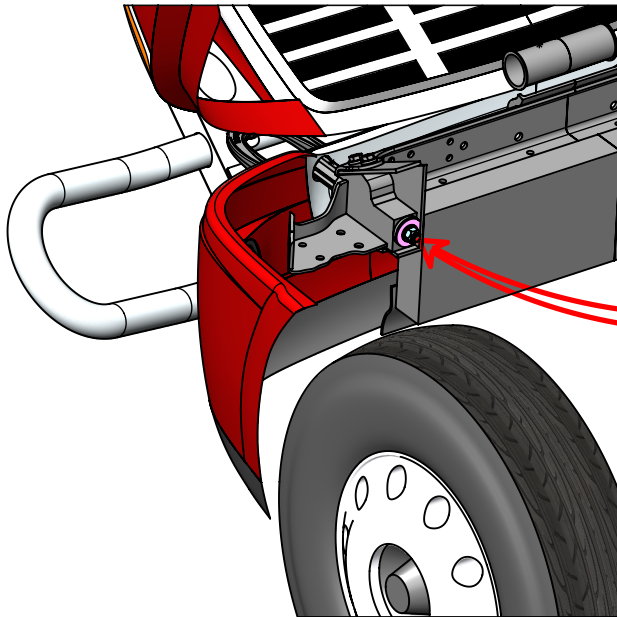
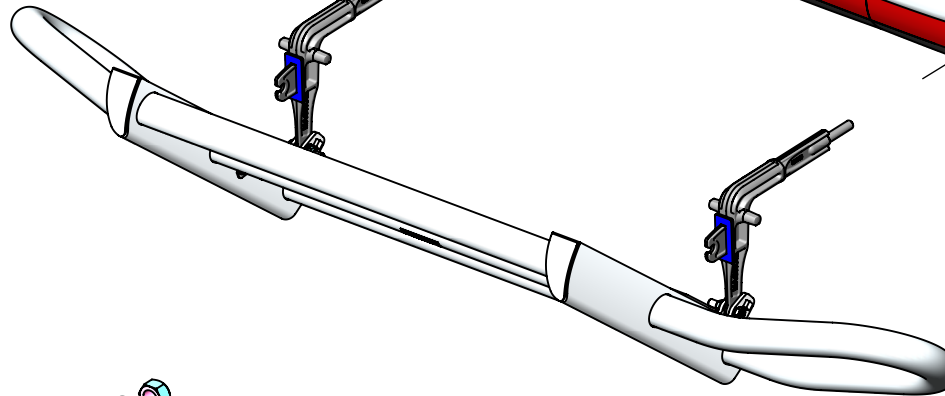
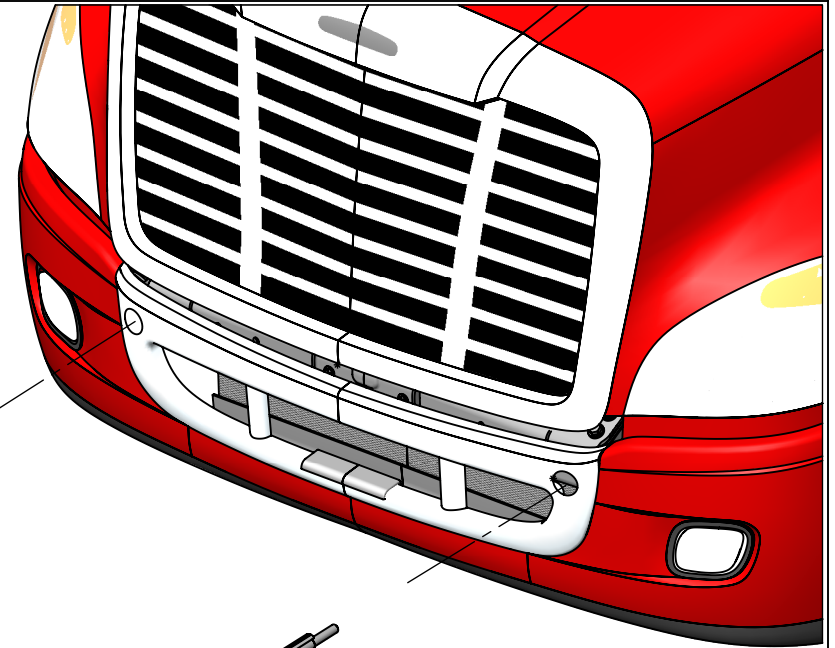


**INSTALL STEPS**

- 1) REMOVE NUTS AND WASHERS FROM STUDS - 2 PLACES.
- 2) WITH BUMPER IN CLOSED POSITION SLIDE STEEL BRACKETS INTO TOW SOCKETS IN TRUCK.
- 3) CAREFULLY OPEN BUMPER, ENSURING IT DOES NOT SLIP OUT OF TOW SOCKETS
- 4) OPEN TRUCK HOOD AND INSTALL NUTS AND WASHERS SHOWN IN DETAIL A
- 5) FULLY TIGHTEN NUTS ONTO STUD. TORQUE = 210 FT./LB. DO NOT EXCEED THIS VALUE OR STRIPPING WILL OCCUR. ENSURE THAT STUD IS FREE OF LUBRICATION BEFORE TIGHTENING.
- 6) CLOSE HOOD AND BUMPER. INSTALL IS COMPLETE

NUTS AND WASHERS ARE INSTALLED AFTER BUMPER IS "PLUGGED" INTO TOW SOCKETS SEE DETAIL "A"



**DETAIL A**

**MAGNUM TRAILER & EQUIPMENT INC.**



**FRACTIONS CHART**

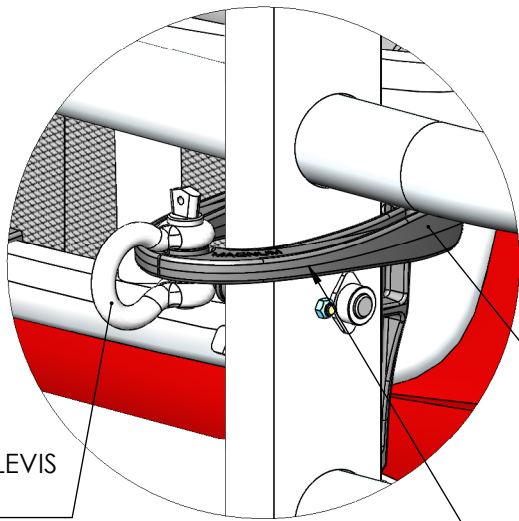
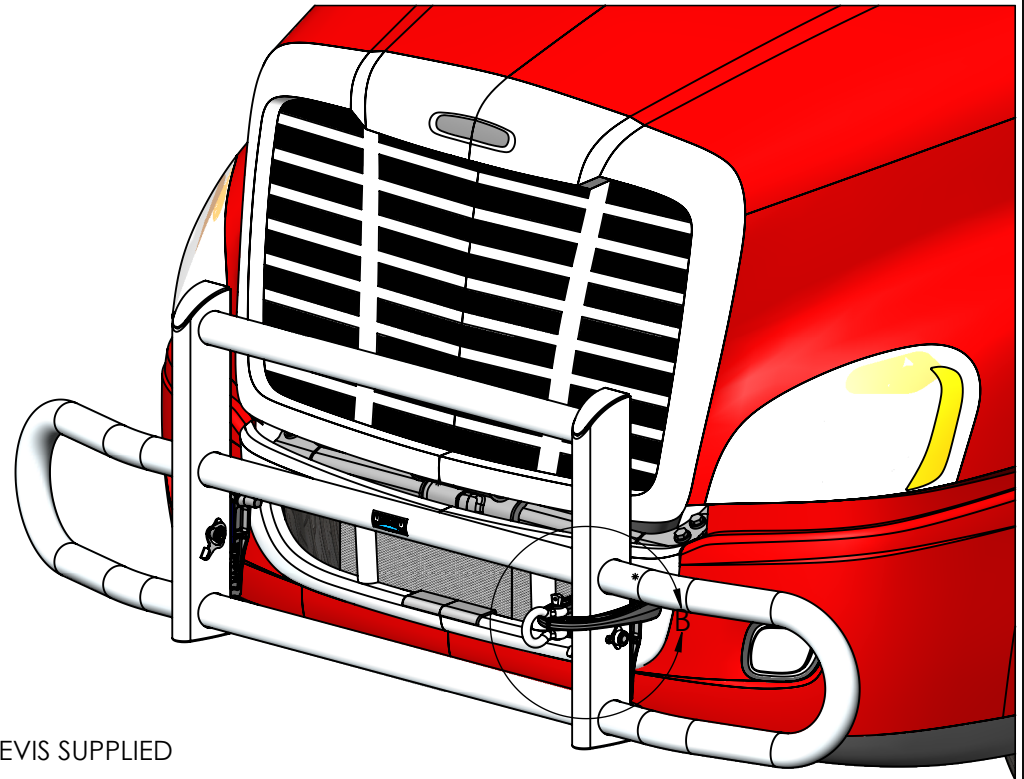
1/32	.03125	9/32	.28125	17/32	.53125	25/32	.78125
1/16	.0625	5/16	.3125	9/16	.5625	13/16	.8125
3/32	.09375	11/32	.34375	19/32	.59375	27/32	.84375
1/8	.125	3/8	.375	5/8	.625	7/8	.875
5/32	.15625	13/32	.40625	21/32	.65625	29/32	.90625
3/16	.1875	7/16	.4375	11/16	.6875	15/16	.9375
7/32	.21875	15/32	.46875	23/32	.71875	31/32	.96875
1/4	.25	1/2	.5	3/4	.75		

UNLESS OTHERWISE SPECIFIED DIMENSIONS ARE IN INCHES TOLERANCES ARE:

FRACTIONS ANGLES  
+/- 1/16" +/- 1deg

DIMENSIONS TO SHARP POINTS

SHEET NAME Sheet1		TITLE <b>17141 BUMPER ON FREIGHTLINER CASCADIA 2008</b>		
CURRENT CUSTOMER	STOCK NUMBER	VENDOR NUMBER	WEIGHT - LB. 106.	
<b>WO#</b>	DRAWN BY GW	DRAWN DATE 7/20/2016	REV. <b>C</b>	
SCALE 1:4	MODELLER GW	DRAWING NUMBER <b>AA-44090</b>	NUMBER OF SHEETS 1	



SECURE TOW-CLEVIS WITH SHACKLE SUPPLIED

TOW-CLEVIS SUPPLIED

DETAIL B  
SCALE 1 : 6

INSTALL & USE TOW COMPONENTS ONLY WHEN TOWING.  
INSPECT TOWING COMPONENTS BEFORE INSTALLATION

**MAGNUM TRAILER & EQUIPMENT INC.**



**FRACTIONS CHART**

1/32	.03125	9/32	.28125	17/32	.53125	25/32	.78125
1/16	.0625	5/16	.3125	9/16	.5625	13/16	.8125
3/32	.09375	11/32	.34375	19/32	.59375	27/32	.84375
1/8	.125	3/8	.375	5/8	.625	7/8	.875
5/32	.15625	13/32	.40625	21/32	.65625	29/32	.90625
3/16	.1875	7/16	.4375	11/16	.6875	15/16	.9375
7/32	.21875	15/32	.46875	23/32	.71875	31/32	.96875
1/4	.25	1/2	.5	3/4	.75		

UNLESS OTHERWISE SPECIFIED DIMENSIONS ARE IN INCHES TOLERANCES ARE:

FRACTIONS	ANGLES
+/- 1/16"	+/- 1°
.XX"	.XXX"
+/- 0.03"	+/- 0.005"

DIMENSIONS TO SHARP POINTS

SHEET NAME		TITLE		
Sheet4		17141 BUMPER ON FREIGHTLINER CASCADIA 2008		
CURRENT CUSTOMER	STOCK NUMBER	VENDOR NUMBER	WEIGHT - LB.	
			106.	
WO#	DRAWN BY	DRAWN DATE	REV.	
	GW	7/20/2016	C	
SCALE	MODELLER	DRAWING NUMBER	NUMBER OF SHEETS	
1:4	GW	AA-44090	1	