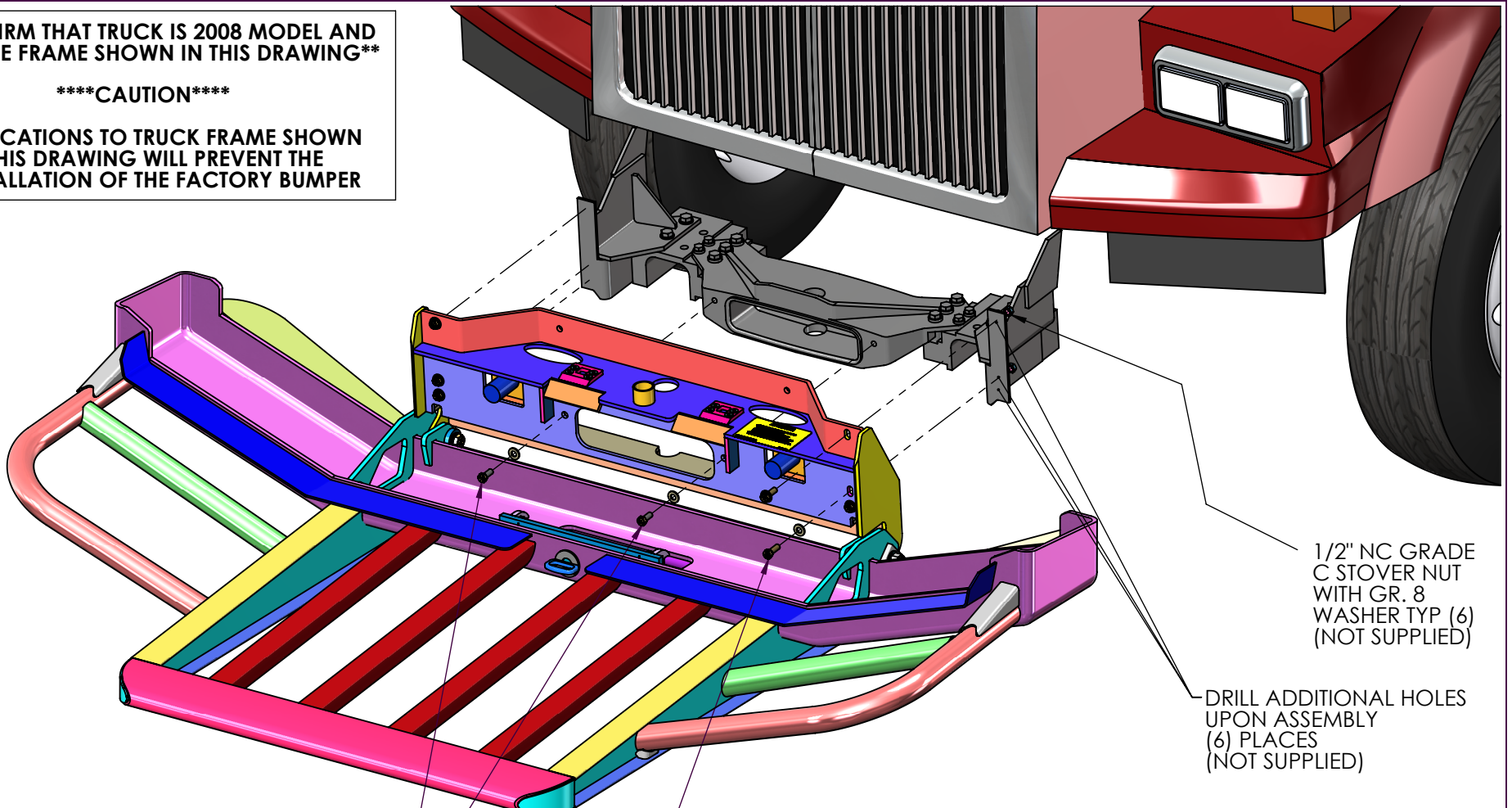


**\*\* CONFIRM THAT TRUCK IS 2008 MODEL AND IS LIKE THE FRAME SHOWN IN THIS DRAWING\*\***

**\*\*\*\*CAUTION\*\*\*\***

**MODIFICATIONS TO TRUCK FRAME SHOWN IN THIS DRAWING WILL PREVENT THE REINSTALLATION OF THE FACTORY BUMPER**



1/2" NC X 1 1/4" GR. 8 CAPSCREW WITH GR. 8 WASHER INTO EXISTING TAPPED HOLE IN X/M TYP (2) (NOT SUPPLIED)

1/2" NC X 1 1/2" GR. 8 CAPSCREW WITH GR 8 WASHER TYP (6) (NOT SUPPLIED)

1/2" NC GRADE C STOVER NUT WITH GR. 8 WASHER TYP (6) (NOT SUPPLIED)

DRILL ADDITIONAL HOLES UPON ASSEMBLY (6) PLACES (NOT SUPPLIED)

SEE FRAME NOTCH SHEET FOR DETAIL ON FRAME PREPARATION

**MAGNUM TRAILER & EQUIPMENT INC.**



**PROCESS CODES**

- A - MODIFY SURFACE FINISH
- B - BURN (FLAME)
- C - CUT TO LENGTH
- D - DRILL
- F - FORM
- H - HI DEF PLASMA
- K - CAST
- L - LASER
- M - MACHINE
- P - PUNCH
- Q - PAINT OR COATING
- R - ROLLED
- S - SHEAR
- T - TRIM
- V - LAYOUT
- W - WATER CUT
- X - EXTRUDE
- Y - MODIFY
- Z - HEAT TREAT

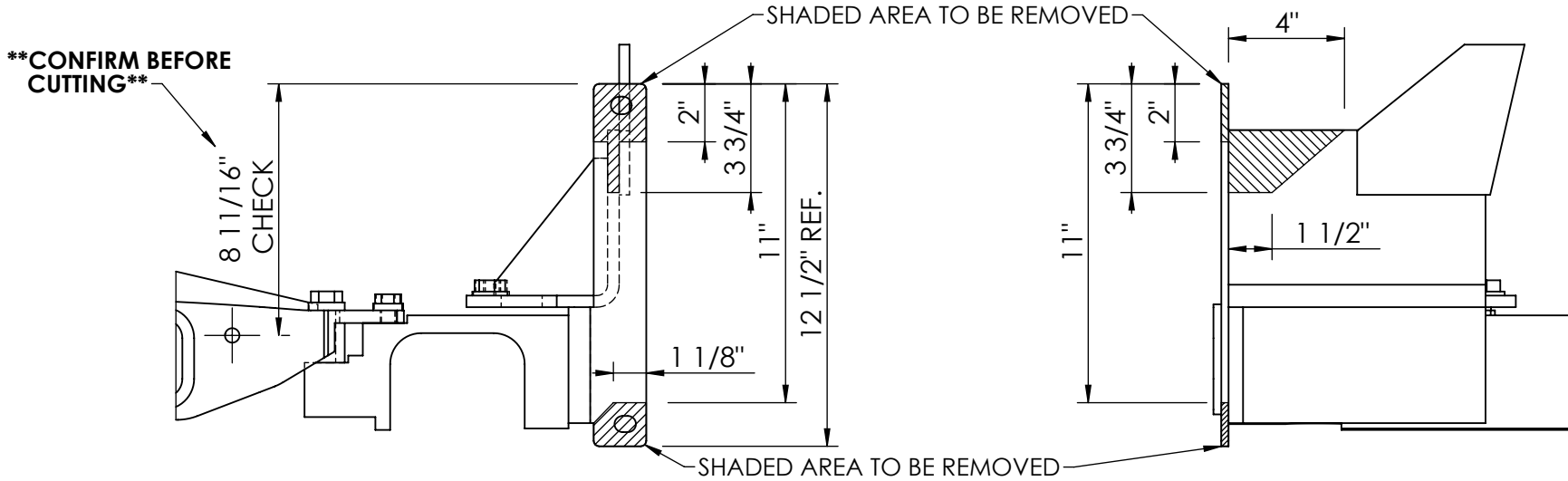
UNLESS OTHERWISE SPECIFIED DIMENSIONS ARE IN INCHES TOLERANCES ARE:

FRACTIONS +/- 1/16" ANGLES +/- 1deg

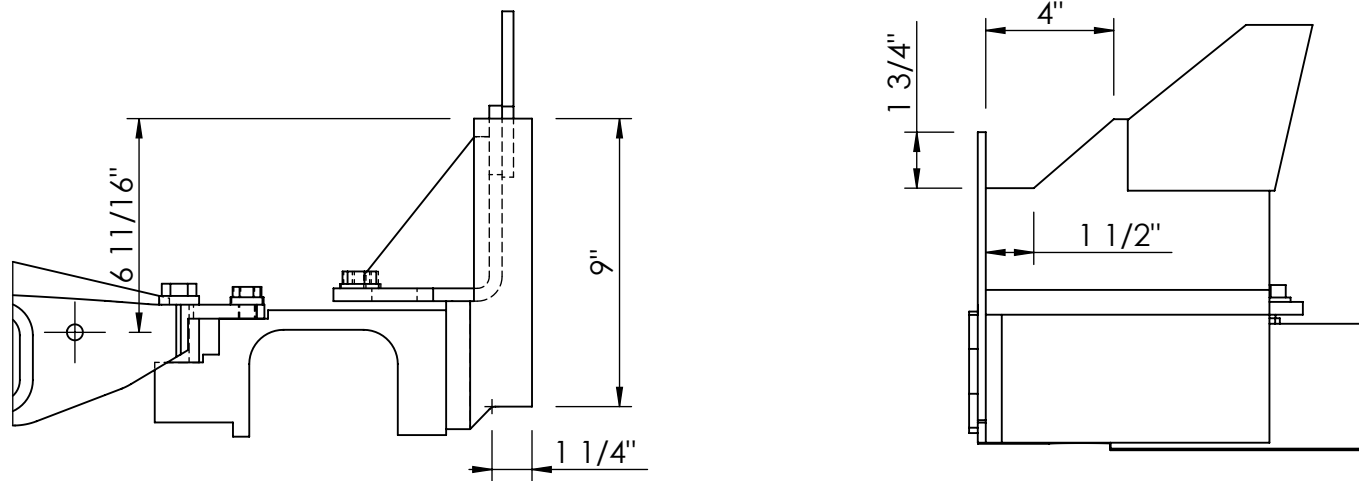
DIMENSIONS TO SHARP POINTS

SHEET NAME Sheet1		TITLE <b>17057 BUMPER ON 2008 WESTERN STAR 4900 RAISED SBA</b>	
CURRENT CUSTOMER	STOCK NUMBER	VENDOR NUMBER	WEIGHT - LB.
<b>WO#</b>	DRAWN BY GW	DRAWN DATE 1/18/2008	REV. <b>A</b>
SCALE 1:14	MODELLER GW	DRAWING NUMBER <b>AA-18962</b>	NUMBER OF SHEETS 3

### 4900 FRAME - RAISED HOOD - FACTORY CONFIGURATION



### 4900 FRAME - RAISED HOOD - MODIFIED CONFIGURATION



**MAGNUM TRAILER & EQUIPMENT INC.**



**PROCESS CODES**

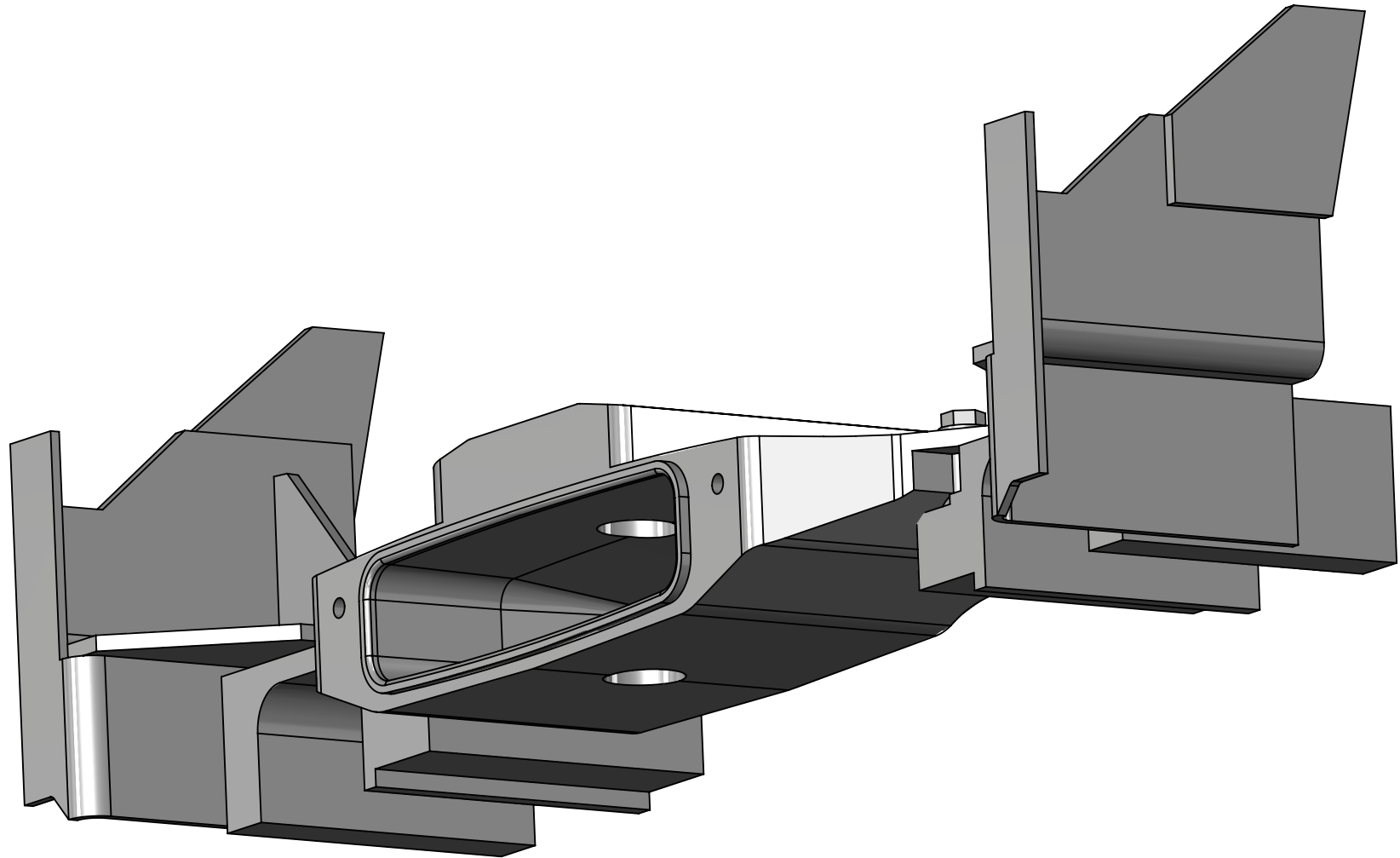
- |                           |                      |
|---------------------------|----------------------|
| A - MODIFY SURFACE FINISH | Q - PAINT OR COATING |
| B - BURN (FLAME)          | R - ROLLED           |
| C - CUT TO LENGTH         | S - SHEAR            |
| D - DRILL                 | T - TRIM             |
| F - FORM                  | V - LAYOUT           |
| H - HI DEF PLASMA         | W - WATER CUT        |
| K - CAST                  | X - EXTRUDE          |
| L - LASER                 | Y - MODIFY           |
| M - MACHINE               | Z - HEAT TREAT       |
| P - PUNCH                 |                      |

UNLESS OTHERWISE SPECIFIED  
DIMENSIONS ARE IN INCHES  
TOLERANCES ARE:

FRACTIONS ANGLES  
+/- 1/16" +/- 1deg

DIMENSIONS TO SHARP POINTS

SHEET NAME <b>FRAME NOTCH</b>		TITLE	
CURRENT CUSTOMER	STOCK NUMBER	VENDOR NUMBER	WEIGHT - LB. 0.0
<b>WO#</b>	DRAWN BY GW	DRAWN DATE 1/18/2008	REV. <b>A</b>
SCALE 1:6	MODELLER	DRAWING NUMBER <b>AA-18962</b>	NUMBER OF SHEETS 3



**MAGNUM TRAILER  
&  
EQUIPMENT INC.**



**PROCESS CODES**

- |                           |                      |
|---------------------------|----------------------|
| A - MODIFY SURFACE FINISH | Q - PAINT OR COATING |
| B - BURN (FLAME)          | R - ROLLED           |
| C - CUT TO LENGTH         | S - SHEAR            |
| D - DRILL                 | T - TRIM             |
| F - FORM                  | V - LAYOUT           |
| H - HI DEF PLASMA         | W - WATER CUT        |
| K - CAST                  | X - EXTRUDE          |
| L - LASER                 | Y - MODIFY           |
| M - MACHINE               | Z - HEAT TREAT       |
| P - PUNCH                 |                      |

**UNLESS OTHERWISE SPECIFIED  
DIMENSIONS ARE IN INCHES  
TOLERANCES ARE:**

**FRACTIONS ANGLES**  
+/- 1/16" +/- 1deg

**DIMENSIONS TO SHARP POINTS**

SHEET NAME <b>NOTCHED FRAME</b>		TITLE	
CURRENT CUSTOMER	STOCK NUMBER	VENDOR NUMBER	WEIGHT - LB. 0.0
<b>WO#</b>	DRAWN BY GW	DRAWN DATE 1/18/2008	REV. <b>A</b>
SCALE 1:5	MODELLER	DRAWING NUMBER <b>AA-18962</b>	NUMBER OF SHEETS 3