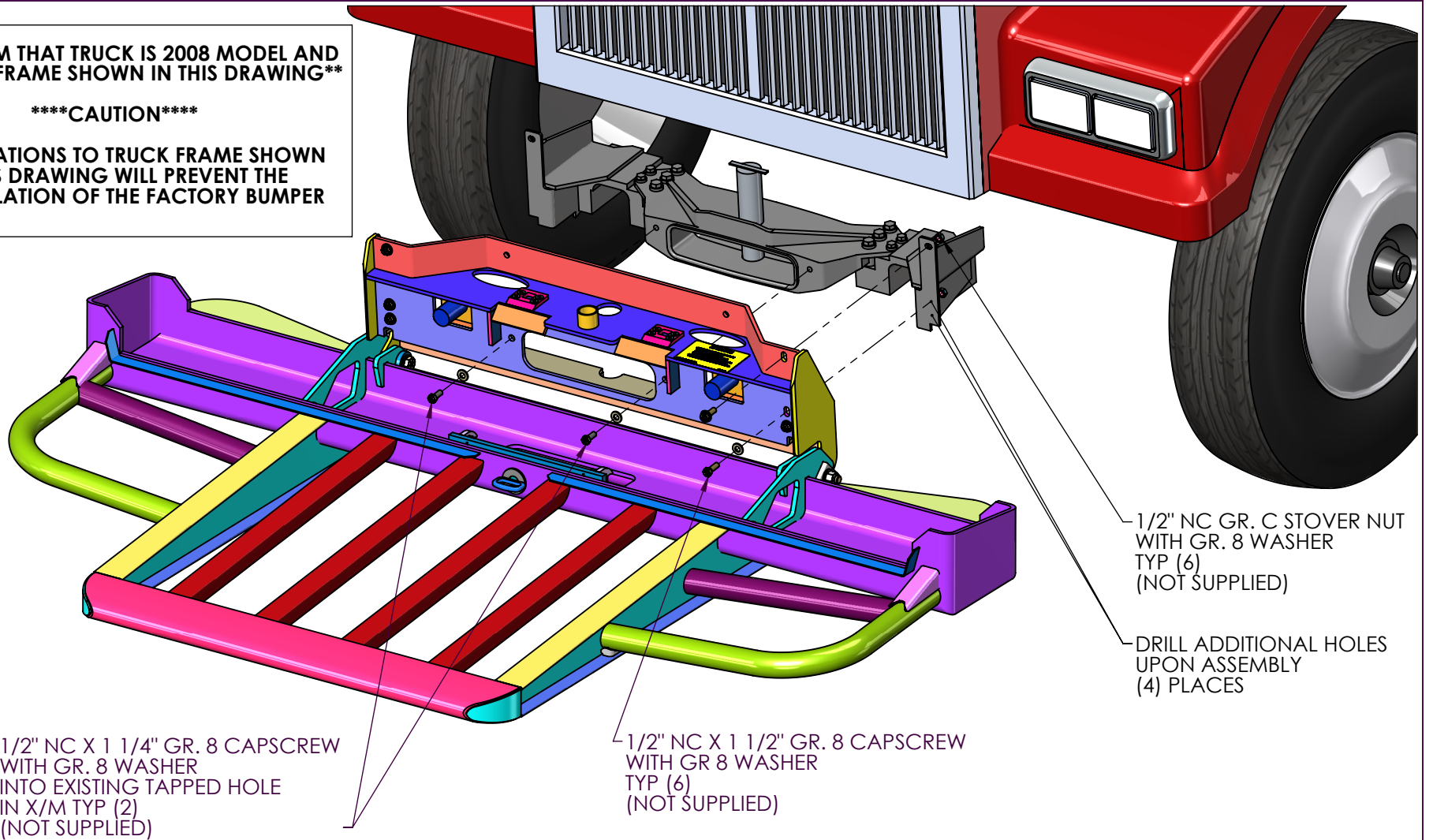


**** CONFIRM THAT TRUCK IS 2008 MODEL AND IS LIKE THE FRAME SHOWN IN THIS DRAWING ****

******CAUTION******

MODIFICATIONS TO TRUCK FRAME SHOWN IN THIS DRAWING WILL PREVENT THE REINSTALLATION OF THE FACTORY BUMPER



1/2" NC X 1 1/4" GR. 8 CAPSCREW WITH GR. 8 WASHER INTO EXISTING TAPPED HOLE IN X/M TYP (2) (NOT SUPPLIED)

1/2" NC X 1 1/2" GR. 8 CAPSCREW WITH GR 8 WASHER TYP (6) (NOT SUPPLIED)

1/2" NC GR. C STOVER NUT WITH GR. 8 WASHER TYP (6) (NOT SUPPLIED)

DRILL ADDITIONAL HOLES UPON ASSEMBLY (4) PLACES

SEE FRAME NOTCH SHEET FOR DETAIL ON FRAME PREPARATION

MAGNUM TRAILER & EQUIPMENT INC.



PROCESS CODES

- | | |
|---------------------------|----------------------|
| A - MODIFY SURFACE FINISH | Q - PAINT OR COATING |
| B - BURN (FLAME) | R - ROLLED |
| C - CUT TO LENGTH | S - SHEAR |
| D - DRILL | T - TRIM |
| F - FORM | V - LAYOUT |
| H - HI DEF PLASMA | W - WATER CUT |
| K - CAST | X - EXTRUDE |
| L - LASER | Y - MODIFY |
| M - MACHINE | Z - HEAT TREAT |
| P - PUNCH | |

UNLESS OTHERWISE SPECIFIED DIMENSIONS ARE IN INCHES TOLERANCES ARE:

FRACTIONS +/- 1/16" ANGLES +/- 1deg

DIMENSIONS TO SHARP POINTS

SHEET NAME

Sheet1

CURRENT CUSTOMER

WO#

SCALE

1:14

TITLE

17038 BUMPER ON 2008 WESTERN STAR 4900 FA

STOCK NUMBER

VENDOR NUMBER

WEIGHT - LB.

DRAWN BY

GW

DRAWN DATE

1/14/2008

REV.

A

MODELLER

GW

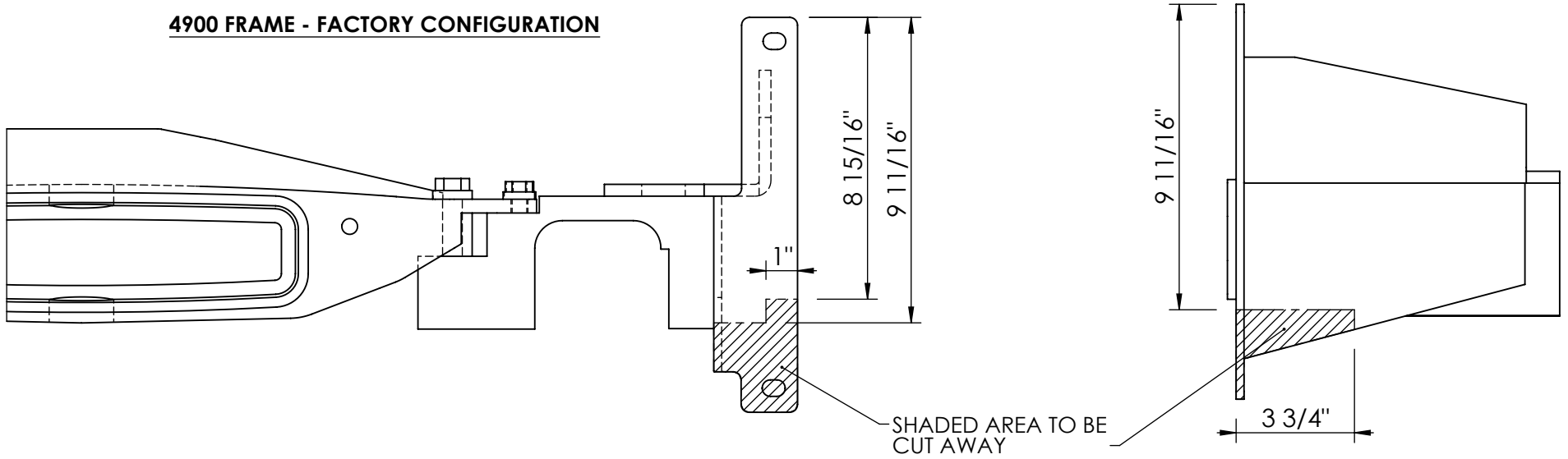
DRAWING NUMBER

AA-18644

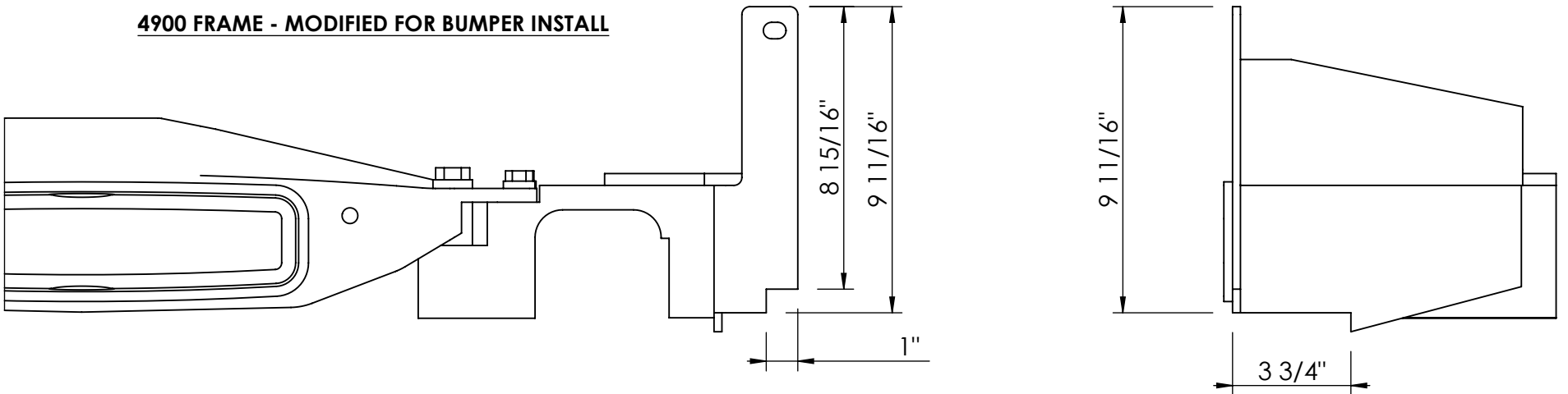
NUMBER OF SHEETS

3

4900 FRAME - FACTORY CONFIGURATION



4900 FRAME - MODIFIED FOR BUMPER INSTALL



MAGNUM TRAILER & EQUIPMENT INC.



PROCESS CODES

- A - MODIFY SURFACE FINISH
- B - BURN (FLAME)
- C - CUT TO LENGTH
- D - DRILL
- F - FORM
- H - HI DEF PLASMA
- K - CAST
- L - LASER
- M - MACHINE
- P - PUNCH
- Q - PAINT OR COATING
- R - ROLLED
- S - SHEAR
- T - TRIM
- V - LAYOUT
- W - WATER CUT
- X - EXTRUDE
- Y - MODIFY
- Z - HEAT TREAT

UNLESS OTHERWISE SPECIFIED
DIMENSIONS ARE IN INCHES
TOLERANCES ARE:

FRACTIONS $\pm 1/16"$ ANGLES $\pm 1 \text{deg}$

DIMENSIONS TO SHARP POINTS

SHEET NAME
FRAME NOTCH

CURRENT CUSTOMER

WO#

SCALE
1:5

TITLE

STOCK NUMBER

DRAWN BY
GW

MODELLER

VENDOR NUMBER

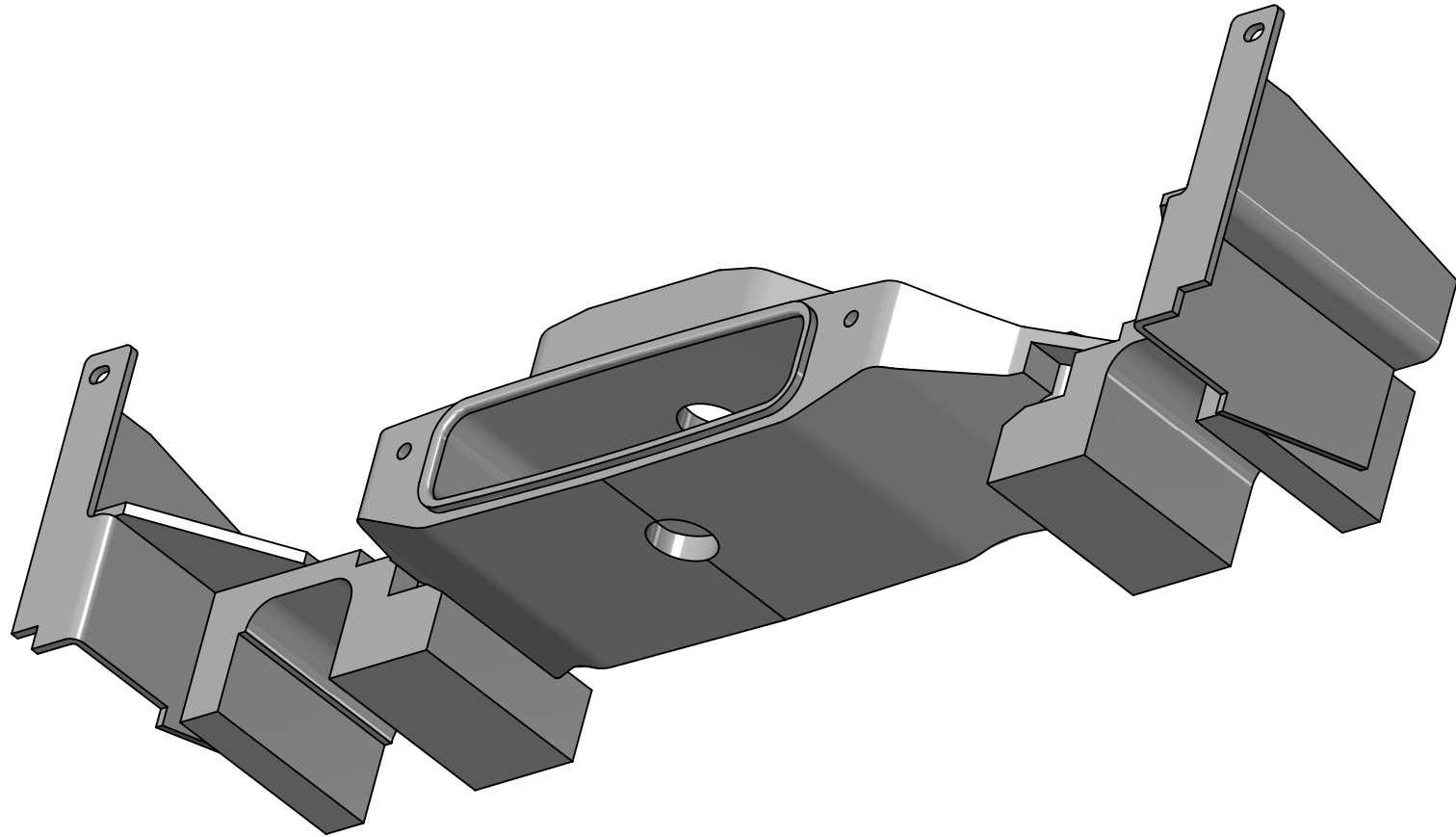
DRAWN DATE
1/14/2008

DRAWING NUMBER
AA-18644

WEIGHT - LB.
211.

REV.
A

NUMBER OF SHEETS
3



**MAGNUM TRAILER
&
EQUIPMENT INC.**



PROCESS CODES

- | | |
|---------------------------|----------------------|
| A - MODIFY SURFACE FINISH | Q - PAINT OR COATING |
| B - BURN (FLAME) | R - ROLLED |
| C - CUT TO LENGTH | S - SHEAR |
| D - DRILL | T - TRIM |
| F - FORM | V - LAYOUT |
| H - HI DEF PLASMA | W - WATER CUT |
| K - CAST | X - EXTRUDE |
| L - LASER | Y - MODIFY |
| M - MACHINE | Z - HEAT TREAT |
| P - PUNCH | |

**UNLESS OTHERWISE SPECIFIED
DIMENSIONS ARE IN INCHES
TOLERANCES ARE:**

FRACTIONS ANGLES
+/- 1/16" +/- 1deg

DIMENSIONS TO SHARP POINTS

SHEET NAME NOTCHED FRAME		TITLE	
CURRENT CUSTOMER	STOCK NUMBER	VENDOR NUMBER	WEIGHT - LB. 211.
WO#	DRAWN BY GW	DRAWN DATE 1/14/2008	REV. A
SCALE 1:5	MODELLER	DRAWING NUMBER AA-18644	NUMBER OF SHEETS 3