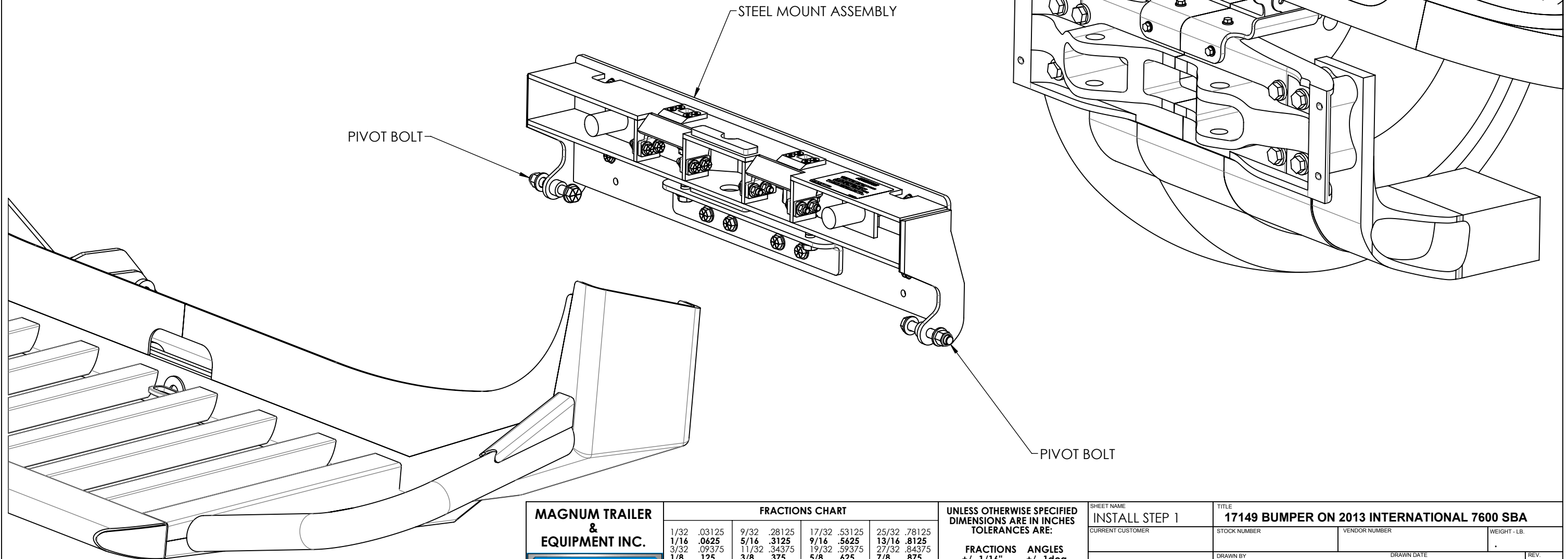


STEP 1

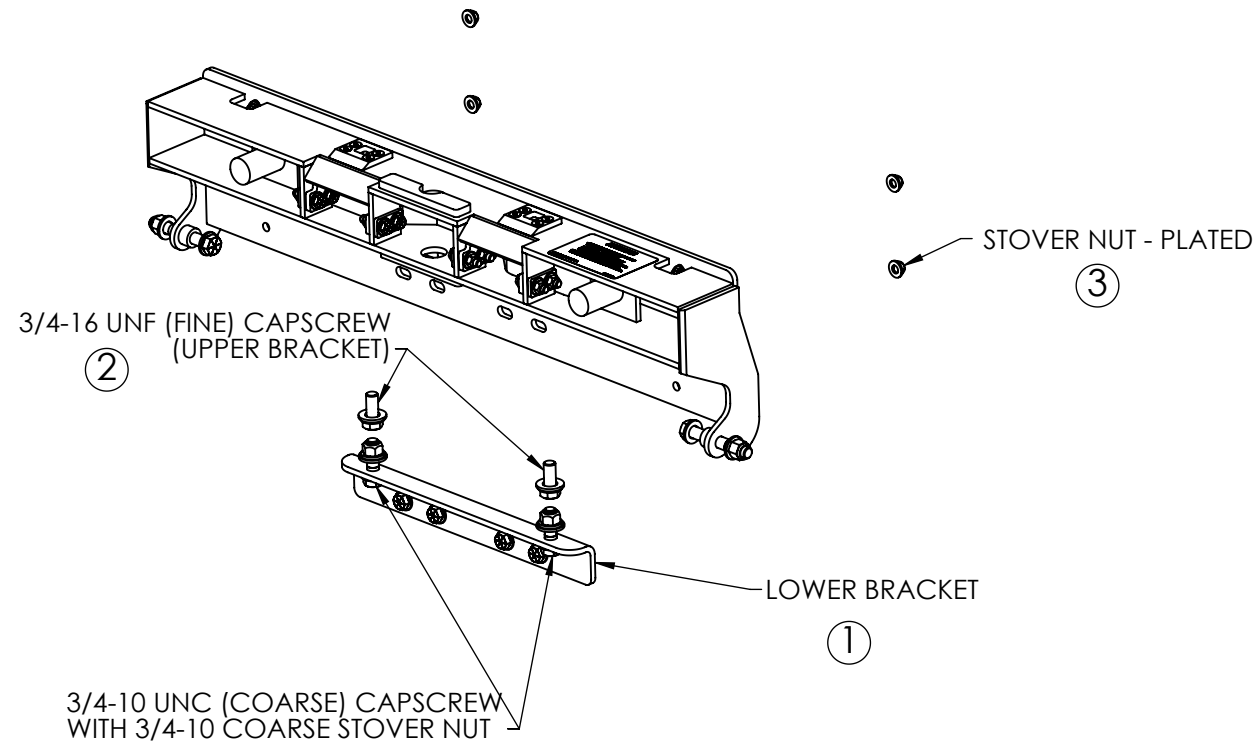
1. REMOVE FACTORY BUMPER FROM TRUCK
2. SEPARATE STEEL MOUNT ASSEMBLY FROM MAGNUM 17149 BUMPER BY REMOVING PIVOT BOLTS SHOWN. **USE CARE AS THIS ASSEMBLY IS QUITE HEAVY.**
3. PLACE ALUMINUM ASSEMBLY IN SAFE PLACE FOR REATTACHMENT IN FUTURE STEP



FRACTIONS CHART							
1/32	.03125	9/32	.28125	17/32	.53125	25/32	.78125
1/16	.0625	5/16	.3125	9/16	.5625	13/16	.8125
3/32	.09375	11/32	.34375	19/32	.59375	27/32	.84375
1/8	.125	3/8	.375	5/8	.625	7/8	.875
5/32	.15625	13/32	.40625	21/32	.65625	29/32	.90625
3/16	.1875	7/16	.4375	11/16	.6875	15/16	.9375
7/32	.21875	15/32	.46875	23/32	.71875	31/32	.96875
1/4	.25	1/2	.5	3/4	.75		

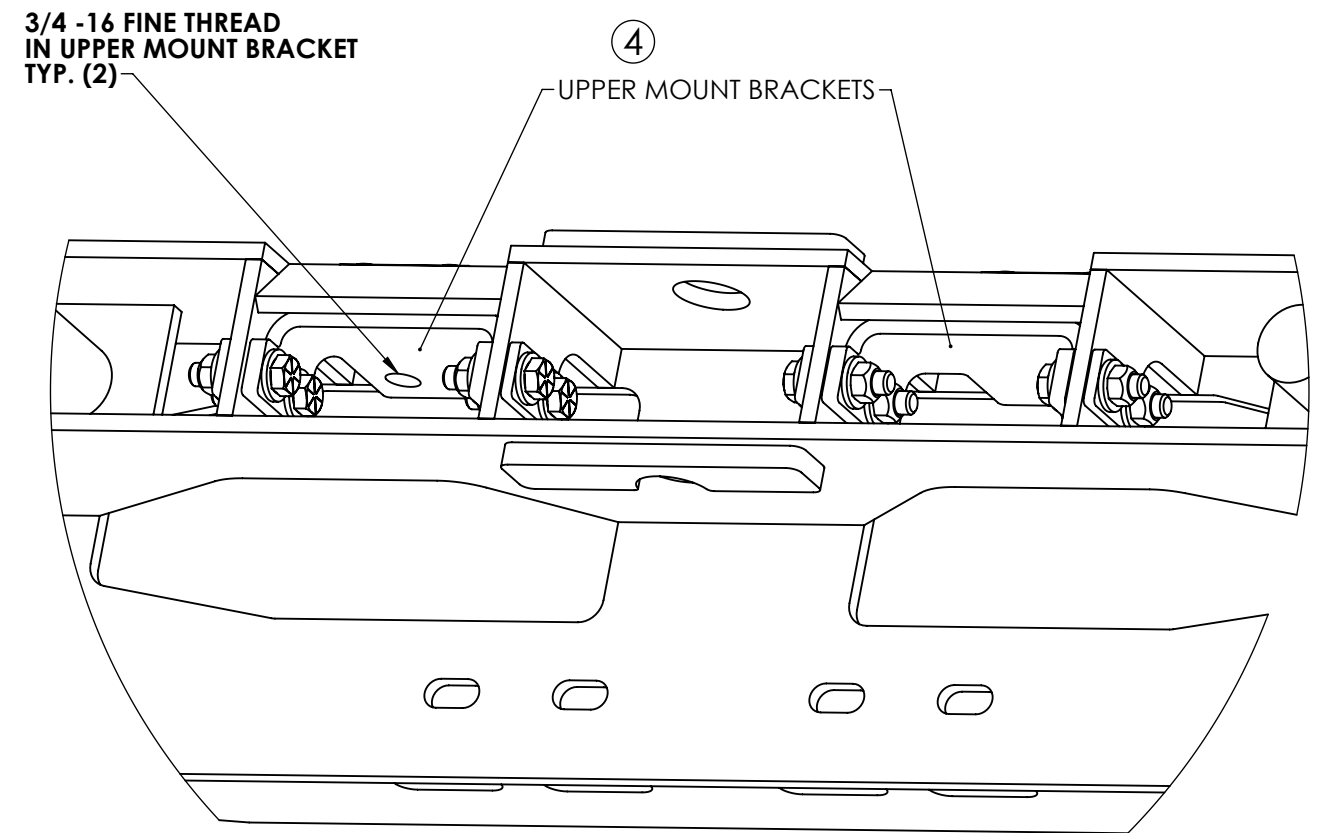
UNLESS OTHERWISE SPECIFIED
DIMENSIONS ARE IN INCHES
TOLERANCES ARE:
FRACTIONS ANGLES
+/- 1/16" +/- 1deg
DIMENSIONS TO SHARP POINTS

SHEET NAME INSTALL STEP 1		TITLE 17149 BUMPER ON 2013 INTERNATIONAL 7600 SBA	
CURRENT CUSTOMER	STOCK NUMBER	VENDOR NUMBER	WEIGHT - LB.
WO#	DRAWN BY GW	DRAWN DATE 2/21/2013	REV.
SCALE 1:8	MODELLER GW	DRAWING NUMBER AB-28860	NUMBER OF SHEETS 1

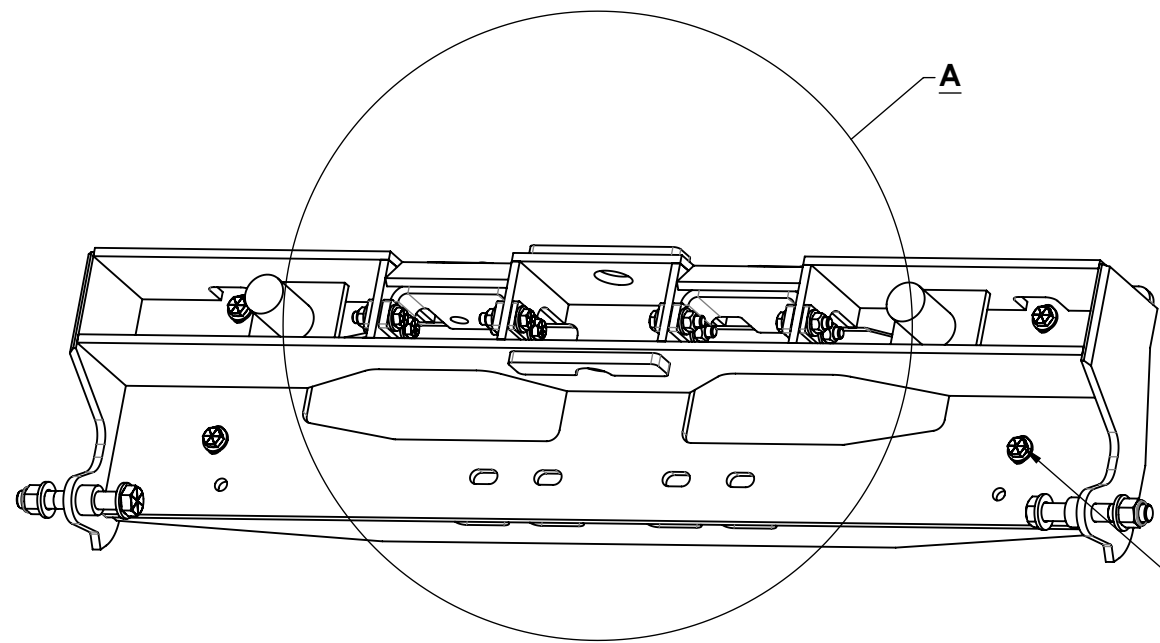


STEP 2 - PREPARE STEEL MOUNT FOR INSTALLATION ON TRUCK

1. REMOVE LOWER BRACKET FROM STEEL MOUNT ASSEMBLY
2. REMOVE 3/4 FINE THREAD CAPSCREWS (2) WITH WASHERS FROM UPPER MOUNT BRACKETS
3. REMOVE STOVER NUTS AND WASHERS FROM 1/2 NC X 1 3/4" BOLTS (4)
4. UPPER MOUNT BRACKETS REMAIN IN PLACE WITH FASTENERS LOOSENEED



**DETAIL A
SCALE 1 : 4**



HEX HEAD BOLT 1/2" NC X 1 3/4" GR. 8 - PLATED

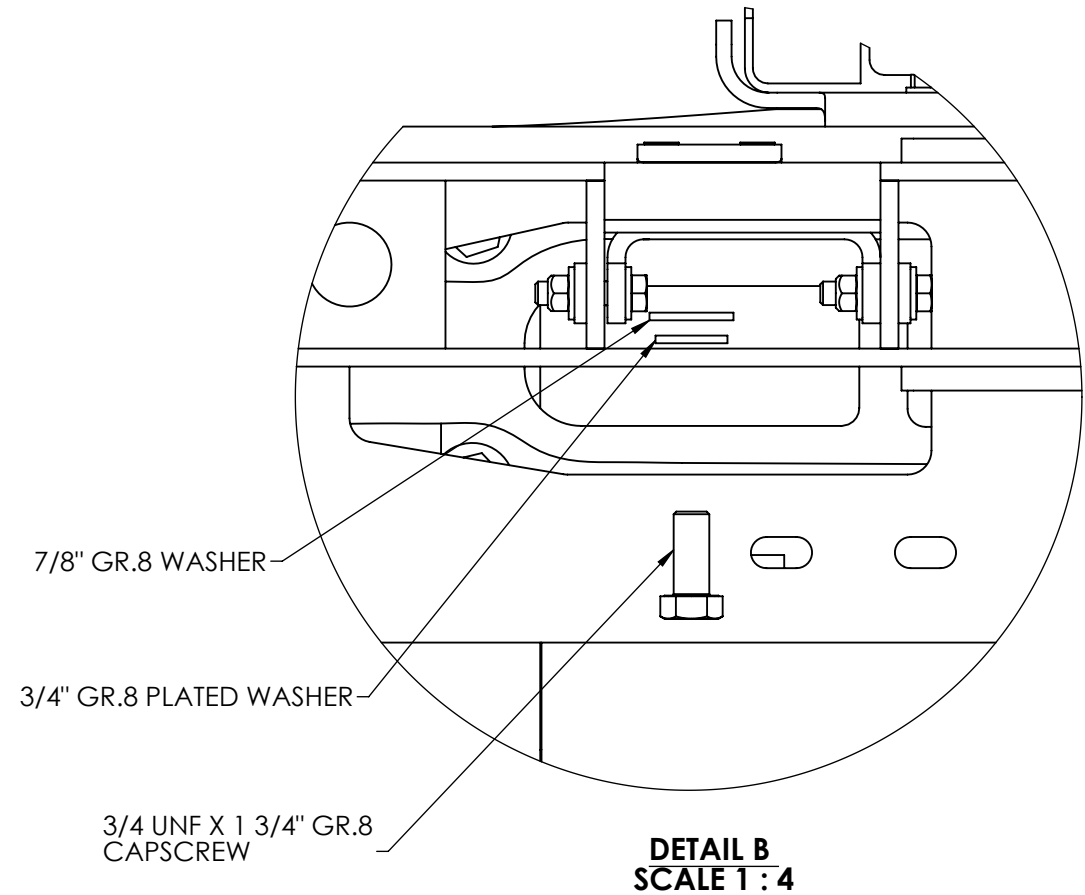
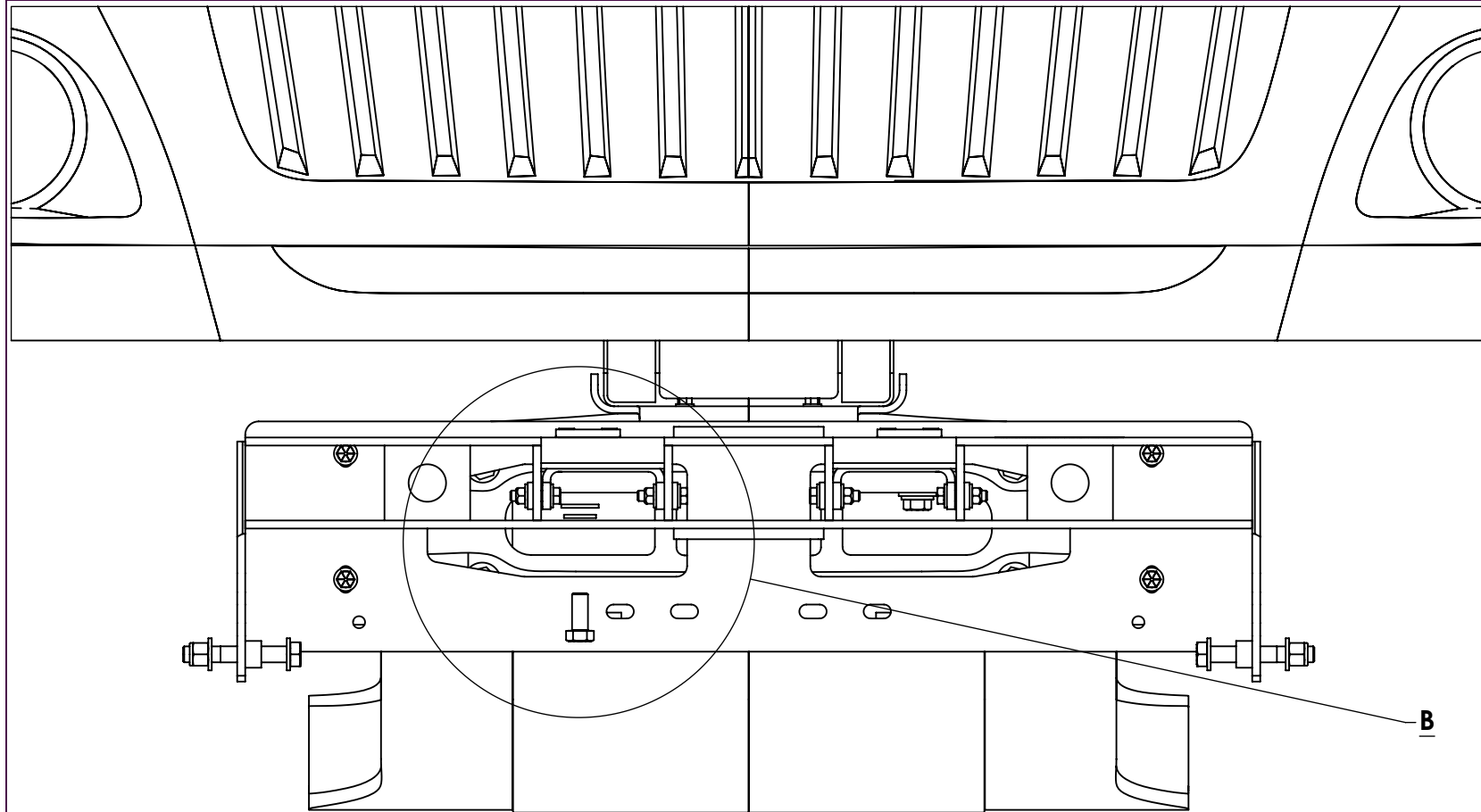


FRACTIONS CHART							
1/32	.03125	9/32	.28125	17/32	.53125	25/32	.78125
1/16	.0625	5/16	.3125	9/16	.5625	13/16	.8125
3/32	.09375	11/32	.34375	19/32	.59375	27/32	.84375
1/8	.125	3/8	.375	5/8	.625	7/8	.875
5/32	.15625	13/32	.40625	21/32	.65625	29/32	.90625
3/16	.1875	7/16	.4375	11/16	.6875	15/16	.9375
7/32	.21875	15/32	.46875	23/32	.71875	31/32	.96875
1/4	.25	1/2	.5	3/4	.75		

UNLESS OTHERWISE SPECIFIED DIMENSIONS ARE IN INCHES TOLERANCES ARE:
FRACTIONS ANGLES
 +/- 1/16" +/- 1deg
 DIMENSIONS TO SHARP POINTS

SHEET NAME INSTALL STEP 2	TITLE 17149 BUMPER ON 2013 INTERNATIONAL 7600 SBA
CURRENT CUSTOMER	STOCK NUMBER
WO#	DRAWN BY GW
SCALE 1:6	DRAWN DATE 2/21/2013
	MODELLER GW

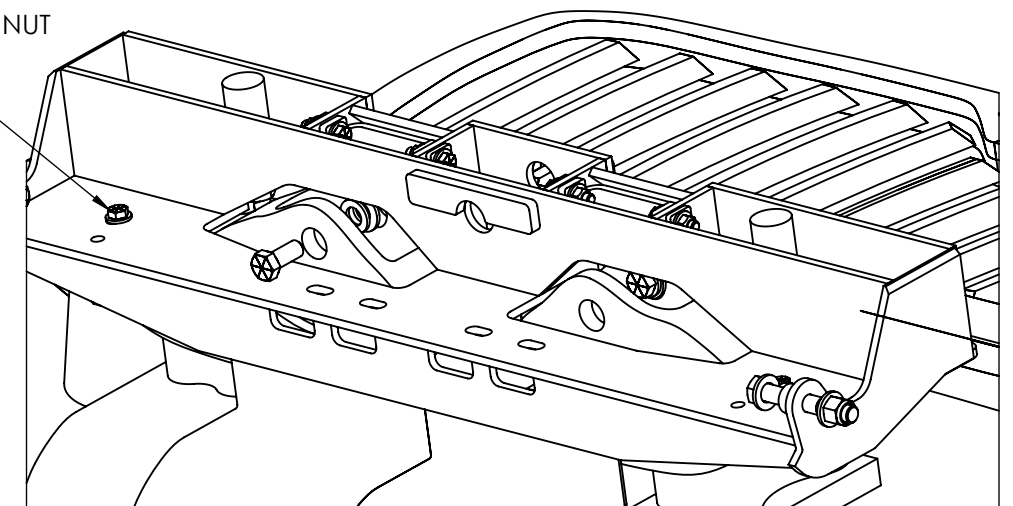
VENDOR NUMBER	WEIGHT - LB.	REV.
DRAWING NUMBER AB-28860	NUMBER OF SHEETS 1	



STEP 3 STEEL MOUNT ASSEMBLY ATTACHMENT TO TRUCK

1. PLACE STEEL MOUNT ASSEMBLY ON FRONT OF TRUCK AS SHOWN - NOTE THAT UPPER BRACKETS GO ON TOP OF UPPER CAST TOW LUGS
2. INSERT (4) 1/2 NC X 1 3/4" BOLTS WITH NUTS AND WASHERS THROUGH HOLES IN TRUCK CROSSMEMBER AS SHOWN. DO NOT FULLY TIGHTEN THESE BOLTS TO ALLOW MOVEMENT OF THE STEEL ASSEMBLY.
3. INSERT 3/4 NF X 1 3/4" GR.8 CAPSCREWS INTO UPPER MOUNT BRACKETS WITH WASHERS STACKED AS SHOWN
4. POSITION THE STEEL MOUNT ASSEMBLY INTO A CENTERED POSITION ON THE TRUCK AND TIGHTEN THE (4) 1/2 NC X 1 3/4" BOLTS. TIGHTEN FIRMLY, BUT NOT TO FULL TORQUE AT THIS TIME AS SOME ADJUSTMENT OF THE POSITION WILL LIKELY BE REQUIRED.
5. POSITION ALUMINUM ASSEMBLY ONTO STEEL ASSEMBLY, INSERT PIVOT BOLTS AND CLOSE BUMPER TO CHECK ALIGNMENT
6. IF ALIGNMENT IS REQUIRED LOOSEN THE (4) 1/2" BOLTS AND MOVE BUMPER INTO CORRECT POSITION. RECHECK ALIGNMENT AND FULLY TIGHTEN THE (4) 1/2" BOLTS

1/2 NC X 1 3/4 GR.8 CAPSCREW WITH (2) GR. 8 WASHERS AND GRADE C STOVER NUT TYP. (4) PLACES



FRACTIONS CHART							
1/32	.03125	9/32	.28125	17/32	.53125	25/32	.78125
1/16	.0625	5/16	.3125	9/16	.5625	13/16	.8125
3/32	.09375	11/32	.34375	19/32	.59375	27/32	.84375
1/8	.125	3/8	.375	5/8	.625	7/8	.875
5/32	.15625	13/32	.40625	21/32	.65625	29/32	.90625
3/16	.1875	7/16	.4375	11/16	.6875	15/16	.9375
7/32	.21875	15/32	.46875	23/32	.71875	31/32	.96875
1/4	.25	1/2	.5	3/4	.75		

UNLESS OTHERWISE SPECIFIED DIMENSIONS ARE IN INCHES TOLERANCES ARE:

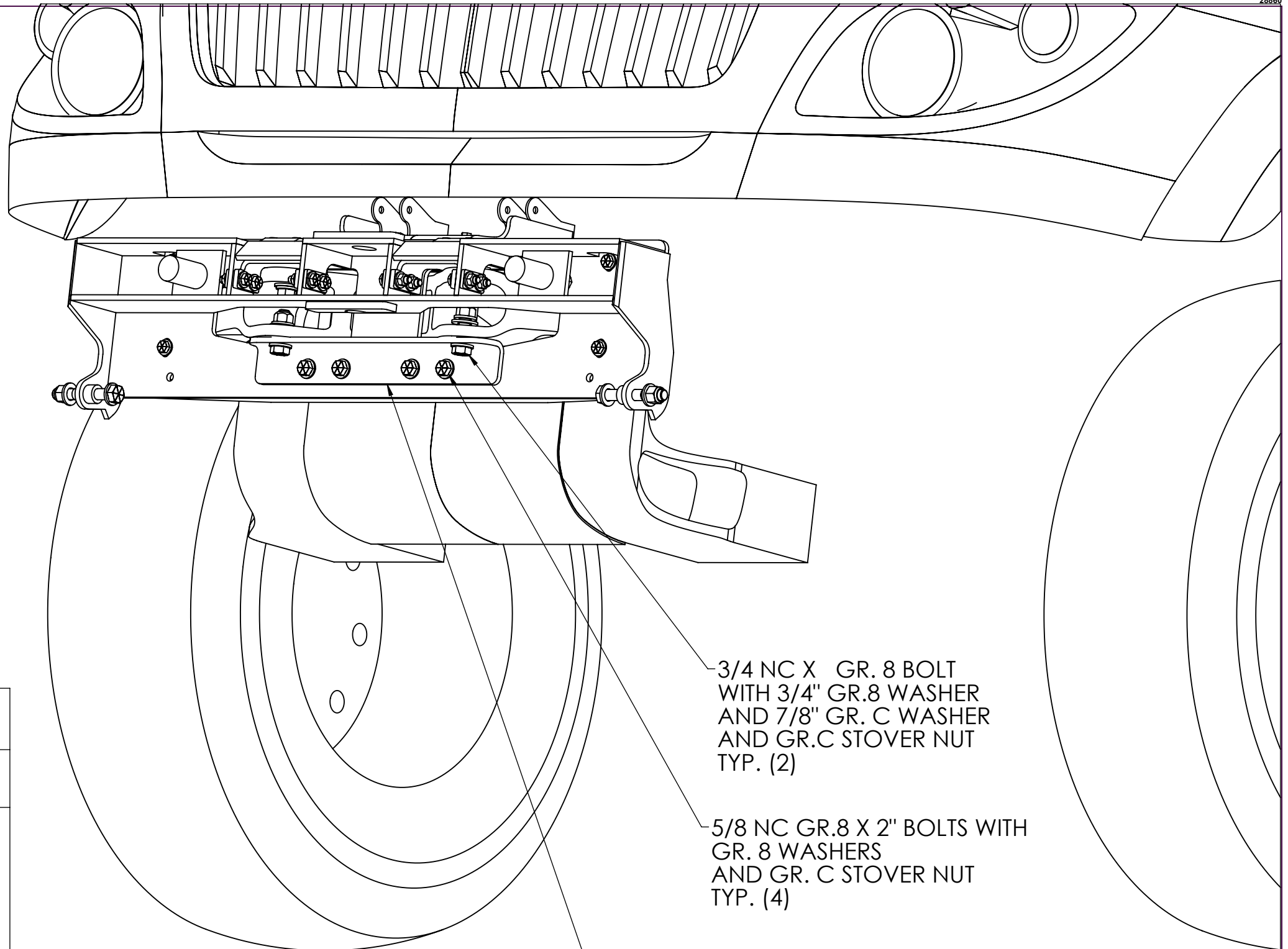
FRACTIONS ANGLES
+/- 1/16" +/- 1deg

DIMENSIONS TO SHARP POINTS

SHEET NAME INSTALL STEP 3	TITLE 17149 BUMPER ON 2013 INTERNATIONAL 7600 SBA		
CURRENT CUSTOMER	STOCK NUMBER	VENDOR NUMBER	WEIGHT - LB.
WO#	DRAWN BY GW	DRAWN DATE 2/21/2013	REV.
SCALE 1:8	MODELLER GW	DRAWING NUMBER AB-28860	NUMBER OF SHEETS 1

STEP 4 LOWER BRACKET INSTALL

1. RECOMMENDED: REMOVE THE ALUMINUM ASSEMBLY TO PROVIDE BETTER ACCESS FOR THE FOLLOWING STEPS
2. POSITION LOWER BRACKET **28878** AS SHOWN AND INSTALL FASTENERS
3. IF BUMPER ALIGNMENT WAS OK AT **STEP 3** TIGHTEN ALL FASTENERS AT THIS TIME. SEE TORQUE VALUES BELOW
4. IF ALUMINUM ASSEMBLY WAS REMOVED, REPLACE IT AND TIGHTEN PIVOT BOLTS FIRMLY BUT NOT EXCESSIVELY TIGHT
5. VERIFY BUMPER ALIGNMENT - INSTALLATION IS COMPLETE



FASTENER TORQUE SPECIFICATIONS	
FASTENERS: GR. 8	TORQUE FT./LB.
1/2" NC WITH STOVER NUT	52
5/8" NC WITH STOVER NUT	100
3/4" NC WITH STOVER NUT	200
3/4 NF INTO TAPPED THREADS	180



FRACTIONS CHART							
1/32	.03125	9/32	.28125	17/32	.53125	25/32	.78125
1/16	.0625	5/16	.3125	9/16	.5625	13/16	.8125
3/32	.09375	11/32	.34375	19/32	.59375	27/32	.84375
1/8	.125	3/8	.375	5/8	.625	7/8	.875
5/32	.15625	13/32	.40625	21/32	.65625	29/32	.90625
3/16	.1875	7/16	.4375	11/16	.6875	15/16	.9375
7/32	.21875	15/32	.46875	23/32	.71875	31/32	.96875
1/4	.25	1/2	.5	3/4	.75		

UNLESS OTHERWISE SPECIFIED DIMENSIONS ARE IN INCHES TOLERANCES ARE:
FRACTIONS **ANGLES**
 +/- 1/16" +/- 1deg
 DIMENSIONS TO SHARP POINTS

SHEET NAME INSTALL STEP 4	TITLE 17149 BUMPER ON 2013 INTERNATIONAL 7600 SBA		
CURRENT CUSTOMER	STOCK NUMBER	VENDOR NUMBER	WEIGHT - LB.
WO#	DRAWN BY GW	DRAWN DATE 2/21/2013	REV.
SCALE 1:8	MODELLER GW	DRAWING NUMBER AB-28860	NUMBER OF SHEETS 1